

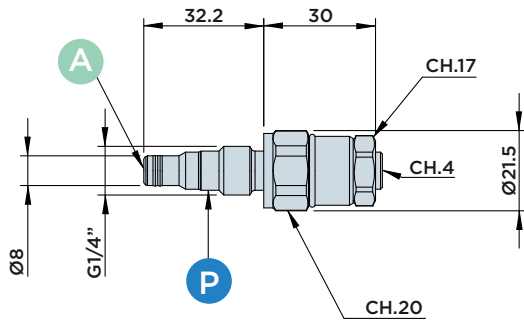
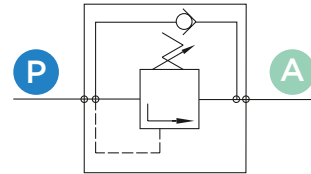
VSQC14



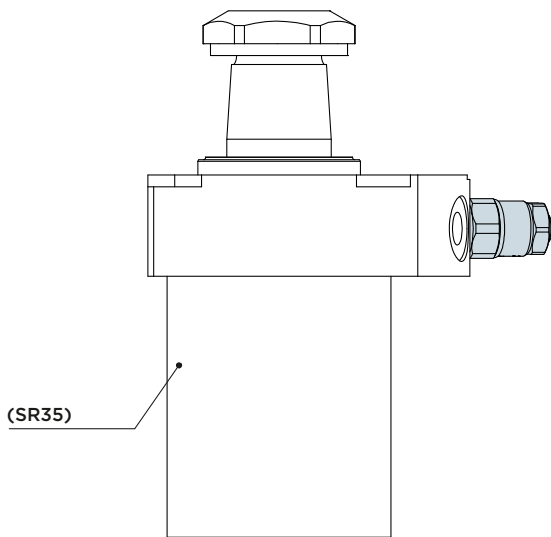
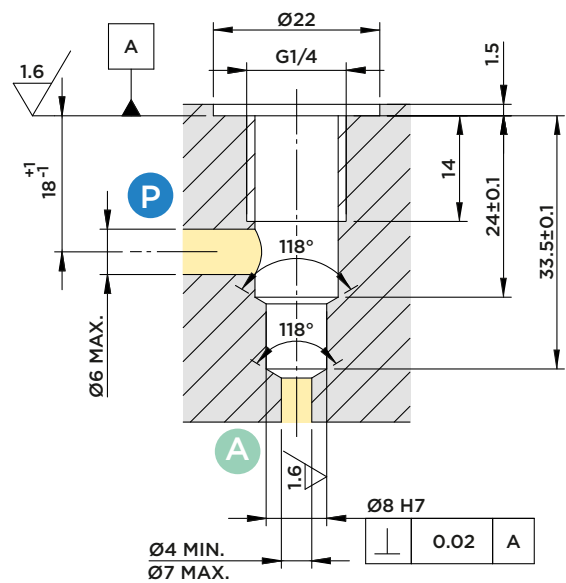
SEQUENCE VALVE CARTRIDGE BODY G1/4"

MAX. OPERATING PRESSURE 350BAR - ADJUSTMENT RANGE: 50-200BAR - FLOW RATE MAX: 5 L/MIN

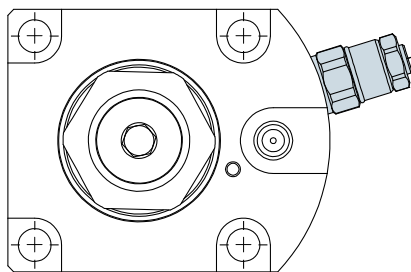
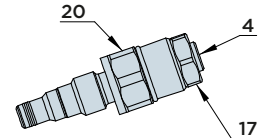
- A** : Inlet
- P** : Outlet



INSTALLATION DIMENSIONS



VSQC14



Material:

- Piston/rod: Case-hardened steel, ground
- Body: Free machining steel, nitrocarburized

Sequence compact valves VSQC are used in hydraulic systems that require a pressure-specific priority or sequence of motions caused by the pressure of the circuit itself and can be installed directly on our SR16/SR18/SR22/SR25/SR28 series cylinders. A one-directional check valve is provided for the free return flow when operation is inverted.



VSQC14

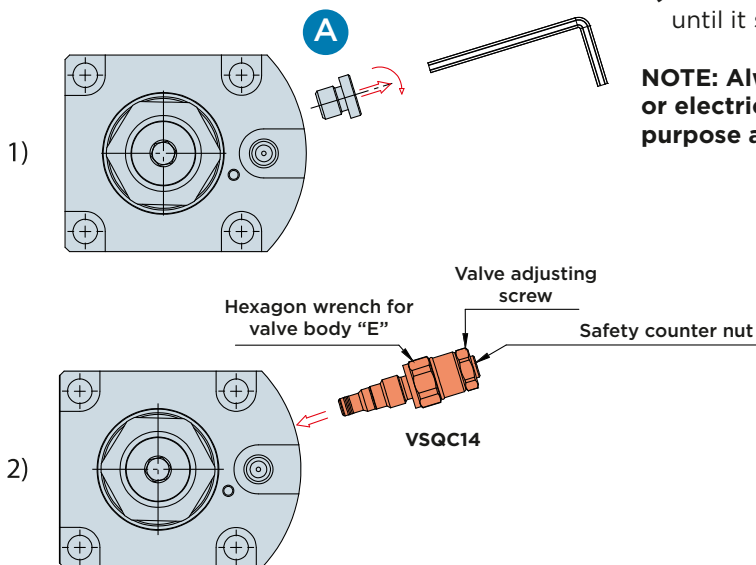
SEQUENCE VALVE CARTRIDGE BODY G1/4"

MAX. OPERATING PRESSURE 350BAR - ADJUSTMENT RANGE: 50-200BAR - FLOW RATE MAX: 5 L/MIN

MOUNTING THE VALVE TO THE CYLINDER

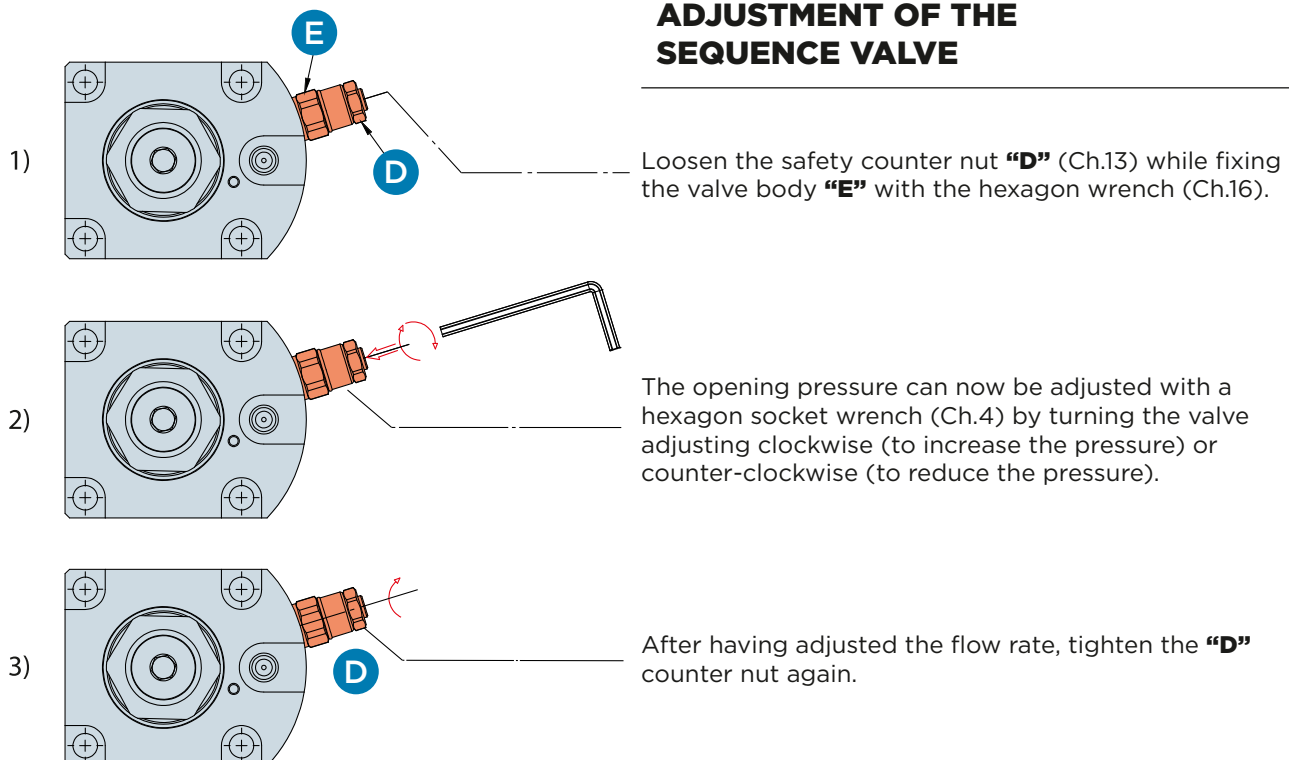
- 1) Remove the plug from the "A" port (clamping).
- 2) Insert the valve into the appropriate seat and screw until it stops.

NOTE: Always tighten the valve by hand. Pneumatic or electric screwdrivers MUST NOT be used for this purpose as they could cause damage to the valve



TORQUE FOR VALVE BODY: "E"
VSQC14 = 25Nm

ADJUSTMENT OF THE SEQUENCE VALVE



HYDROBLOCK