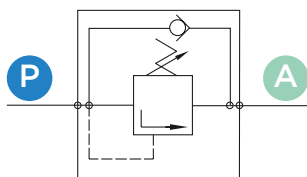


SEQUENCE VALVES

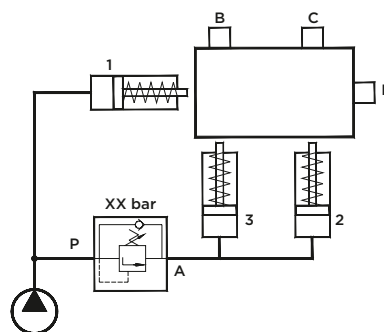


Sequence valves are used in hydraulic systems that require a pressure-specific priority or sequence of motions. A one-directional check valve is provided for the free return flow when operation is inverted. These extremely compact valves can be mounted either with the supplied O-Rings or in-line using the G1/4" BSPP ports directly on the clamping equipment.

Material:

- Valve/cartridge body: Free machining steel, blued.
- Internal parts: High-grade steel, tempered and ground.
- Valve body surface: Zinc-plated

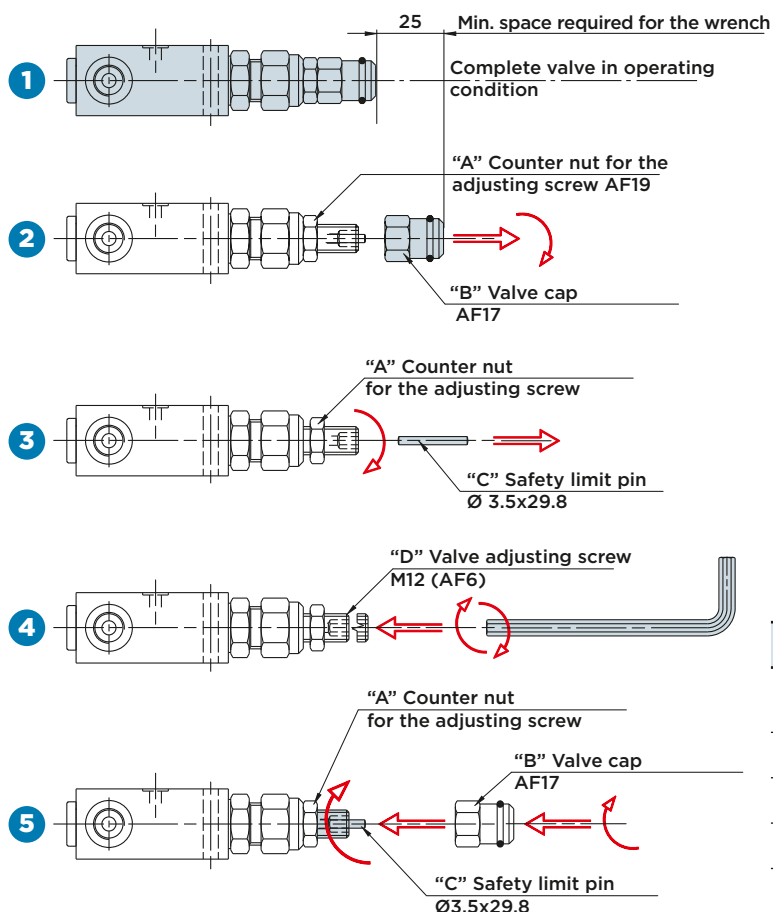
APPLICATION EXAMPLE



Application example:

- 1) Cylinder no. 1 pushes the workpiece against the "D" stop.
- 2) The pressure increases up to XX bar and opens the sequence valve.
- 3) Cylinders no. 2 and no. 3 push the workpiece against the "B" and "C" stops.
- 4) The pressure uniformly rises in all cylinders as the sequence valve is completely open.

ADJUSTMENT OF THE VALVE OPENING PRESSURE



- 1) Complete valve in operating condition.
- 2) Fix the counter nut "A" using a wrench (AF 19) and completely loosen the valve cap "B" by means of a wrench (AF 17).
- 3) Remove the safety limit pin "C" from the valve and loosen the counter nut "A" (AF 19) by some revolutions.
- 4) The opening pressure can now be adjusted with a hexagon socket wrench (AF 6) by turning the valve adjusting screw "D" clockwise (to increase the pressure) or counter-clockwise (to reduce the pressure).
- 5) Once the pressure has been set, lock the counter nut "A", **insert the safety limit pin "C" into the valve and tighten the valve cap "B" using a wrench (AF 17). Upon completion of these steps the valve is ready for use.**

AVAILABLE VERSIONS

Cartridge code	Adjustment range	Pressure increase per screw revolution (bar)
05	5-50	10
10	30-100	20
20	50-220	40
35	80-350	80



HYDROBLOCK

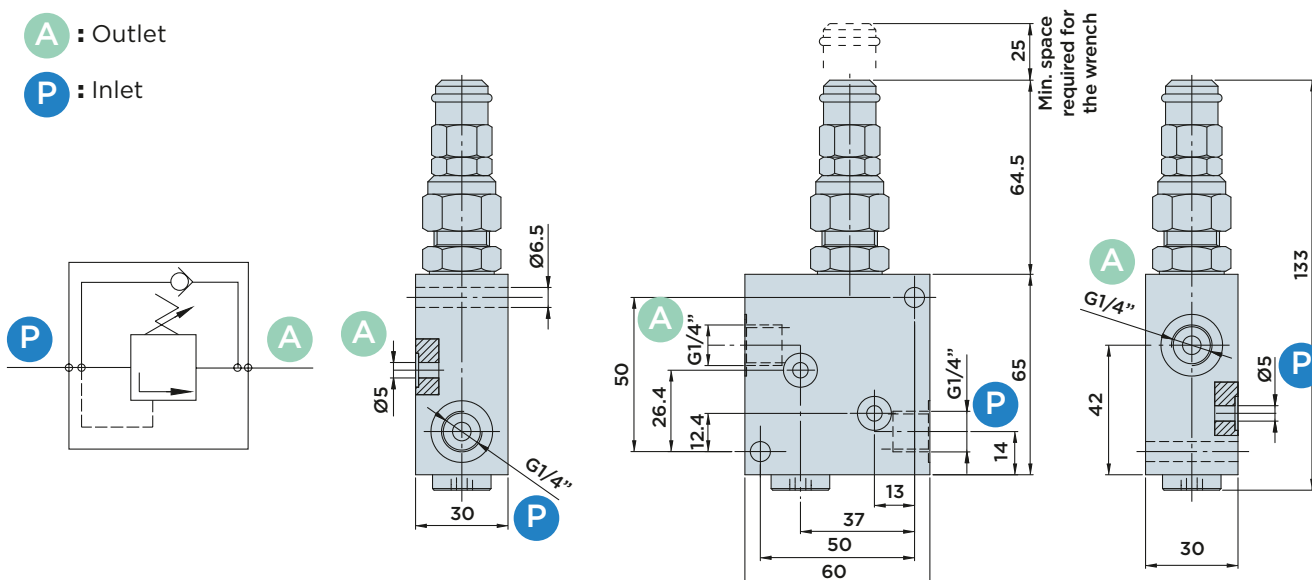
VSQM30

SEQUENCE VALVE WITH DOUBLE CONNECTION FEATURE: FLANGED OR IN-LINE

BY G1/4" PORTS

A : Outlet

P : Inlet



VSQM30 SEQUENCE VALVE

Type	Directly compensated
Connection	O-Ring Ø10.82x1.78 or G1/4"
Maximum pressure	350 bar
Weight	0.8 Kg

Included in the scope of supply:

- O-Rings Ø10.82X1.78
 - Mounting screws M6x40 DIN 912/12.9 grade
- Available upon request:** Upon request, various sequence valves can be assembled to modular systems provided with a common "P" port.

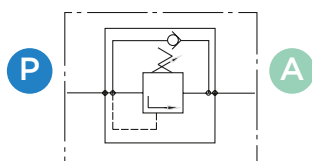
Order number: VSQM30-cartridge code
Example: With an adjustment range of 5÷50 bar, the order no. is VSQM30-05.

VSQM30R

SEQUENCE VALVE WITH FLANGE CONNECTION

A : Outlet

P : Inlet



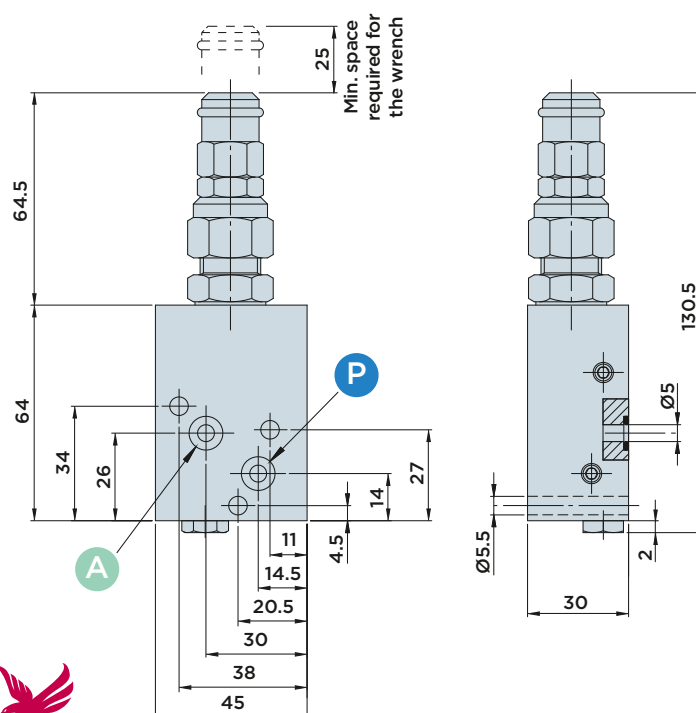
Included in the scope of supply:

- Mounting screws M5x40 DIN 912/12.9 grade
- O-Rings Ø6.75X1.78

Order number: VSQM30R-cartridge code
Example: With an adjustment range of 5÷50 bar, the order no. is VSQM30R-05.

VSQM30R SEQUENCE VALVE

Type	Directly compensated
Connection	Flanged with O-Ring Ø6.75x1.78
Maximum pressure	350 bar
Weight	0.75 Kg



HYDROBLOCK