

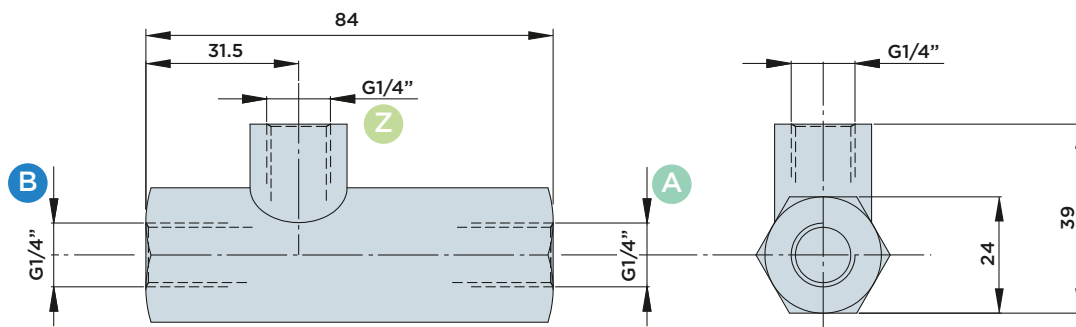
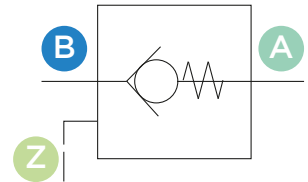
HYDRAULIC COMPONENTS

VRH1 HYDRAULICALLY PILOT-OPERATED CHECK VALVE

A : Cylinder outlet

B : Pressure inlet

Z : Unblocking control



Technical description:

The precise design of seats and slide ensure leakage-free operation.

This valve ensures free flow in only one direction (from “B” to “A”) and blocks the flow in opposite direction unless pressure is supplied to the “Z” pilot port.

When the pilot line is not pressurized, these valves operate like normal one-way check valves blocking the return flow from “A” to “B”.

Application:

The VRH1 valves are usually used to block a cylinder or a part of the hydraulic circuit.

Technical specifications:

- Flow rate: up to 15 l/min.
- Max. pressure: 500 bar
- Medium: Hydraulic fluid on mineral oil basis
- Viscosity range: 22 to 100 cSt.
- Temperature range: -20 to +80° C
- Filter mesh: 25 micron or better are recommended
- Pilot ratio: 1: 2.7

