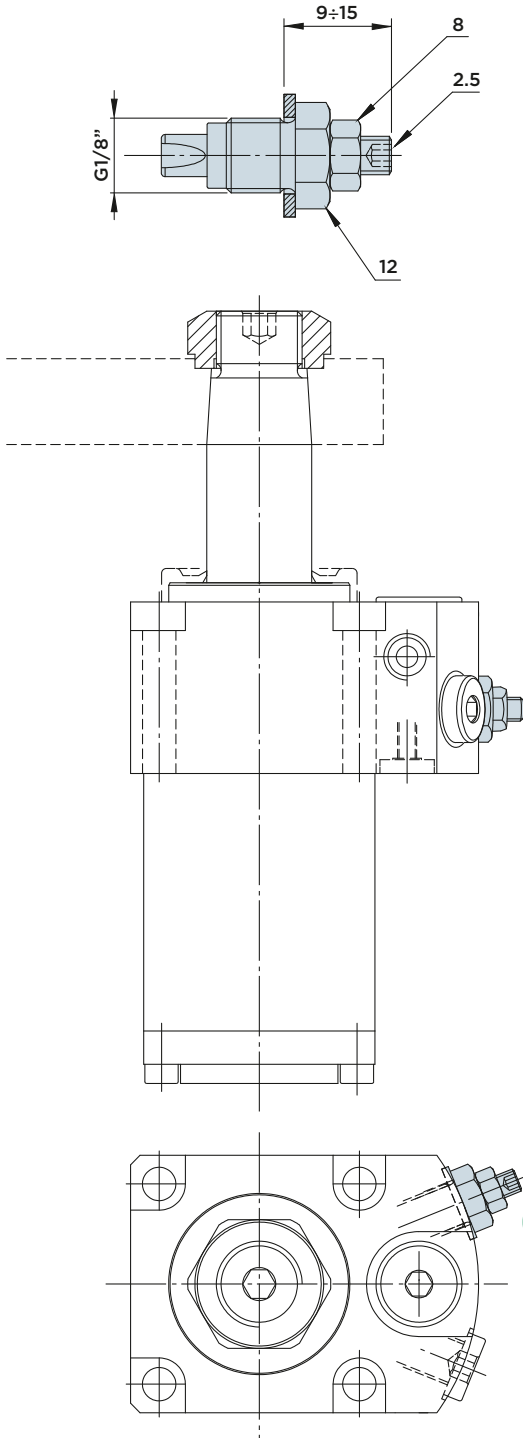
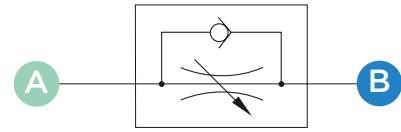


VRF18

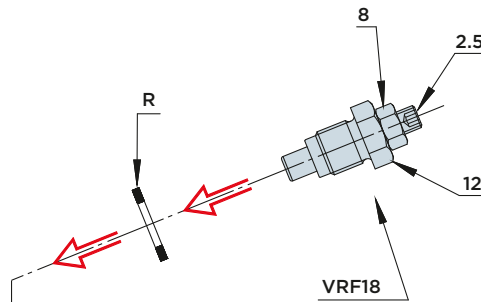
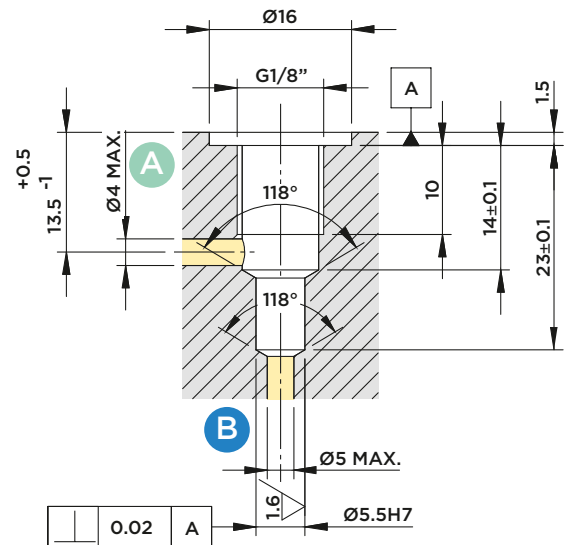
FLOW CONTROL VALVES FOR SR SWING CLAMP CYLINDERS

A → B : Controlled flow

B → A : Free flow



INSTALLATION DIMENSIONS



Using the unidirectional VRF18 flow control valve, the end user can set the swing speed of the clamp arm directly at the fixture and define the clamping sequence of the cylinders at the workpiece to be machined. This valve can exclusively be used for cylinders with flange connection and must be connected to the "A" clamping port. When the swing clamp cylinder is in unclamped state, the flow is free.

Note:

To avoid damage to the internal seals, flow control valves MUST ONLY be adjusted when unpressurized. (see page 42)

With the VRF valve installed it is possible to vent the hydraulic circuit by slightly unscrewing the valve body from the seat to let the air out. Then screw the valve to the torque indicated on the specific product table as indicated in "use and maintenance".

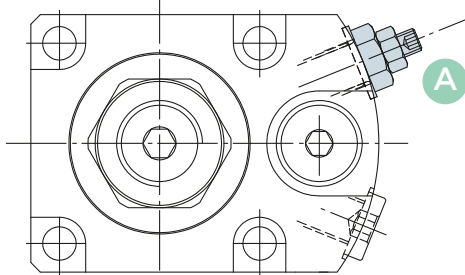
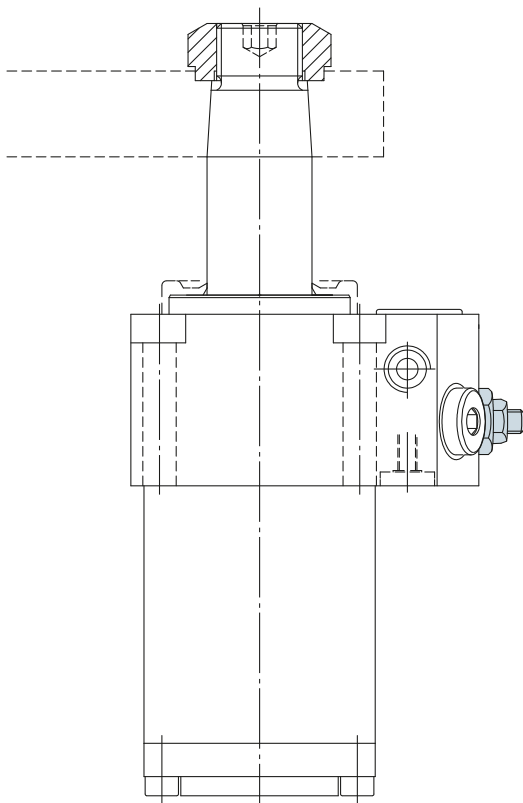
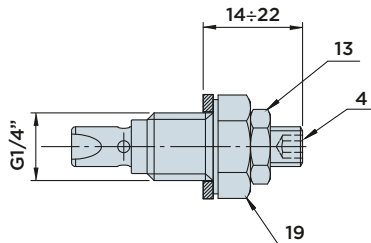
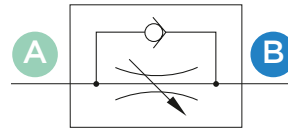


VRF14

FLOW CONTROL VALVES FOR SR SWING CLAMP CYLINDERS

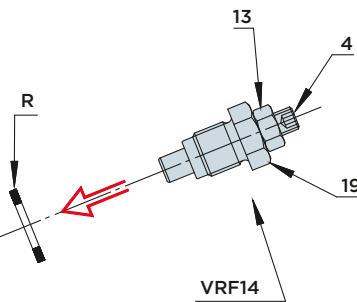
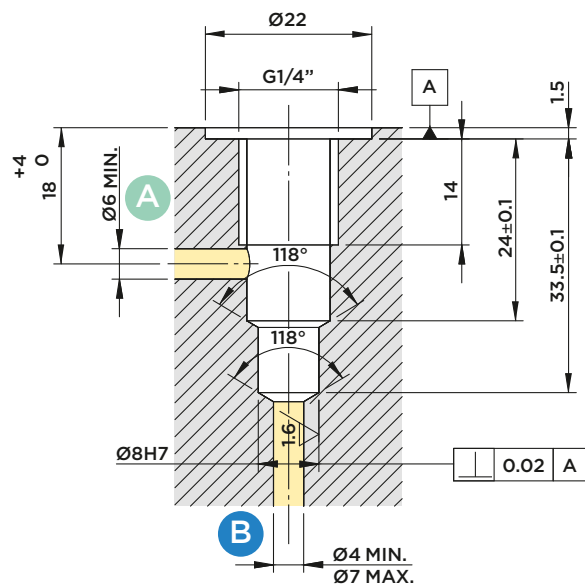
A → B : Controlled flow

B → A : Free flow



With the VRF valve installed it is possible to vent the hydraulic circuit by slightly unscrewing the valve body from the seat to let the air out. Then screw the valve to the torque indicated on the specific product table as indicated in "use and maintenance".

INSTALLATION DIMENSIONS



Using the unidirectional VRF14 flow control valve, the end user can set the swing speed of the clamp arm directly at the fixture and define the clamping sequence of the cylinders at the workpiece to be machined. This valve can exclusively be used for cylinders with flange connection and must be connected to the "A" clamping port. When the swing clamp cylinder is in unclamped state, the flow is free.

Note:

To avoid damage to the seals, flow control valves MUST ONLY be adjusted when unpressurized. (see page 42)



HYDROBLOCK