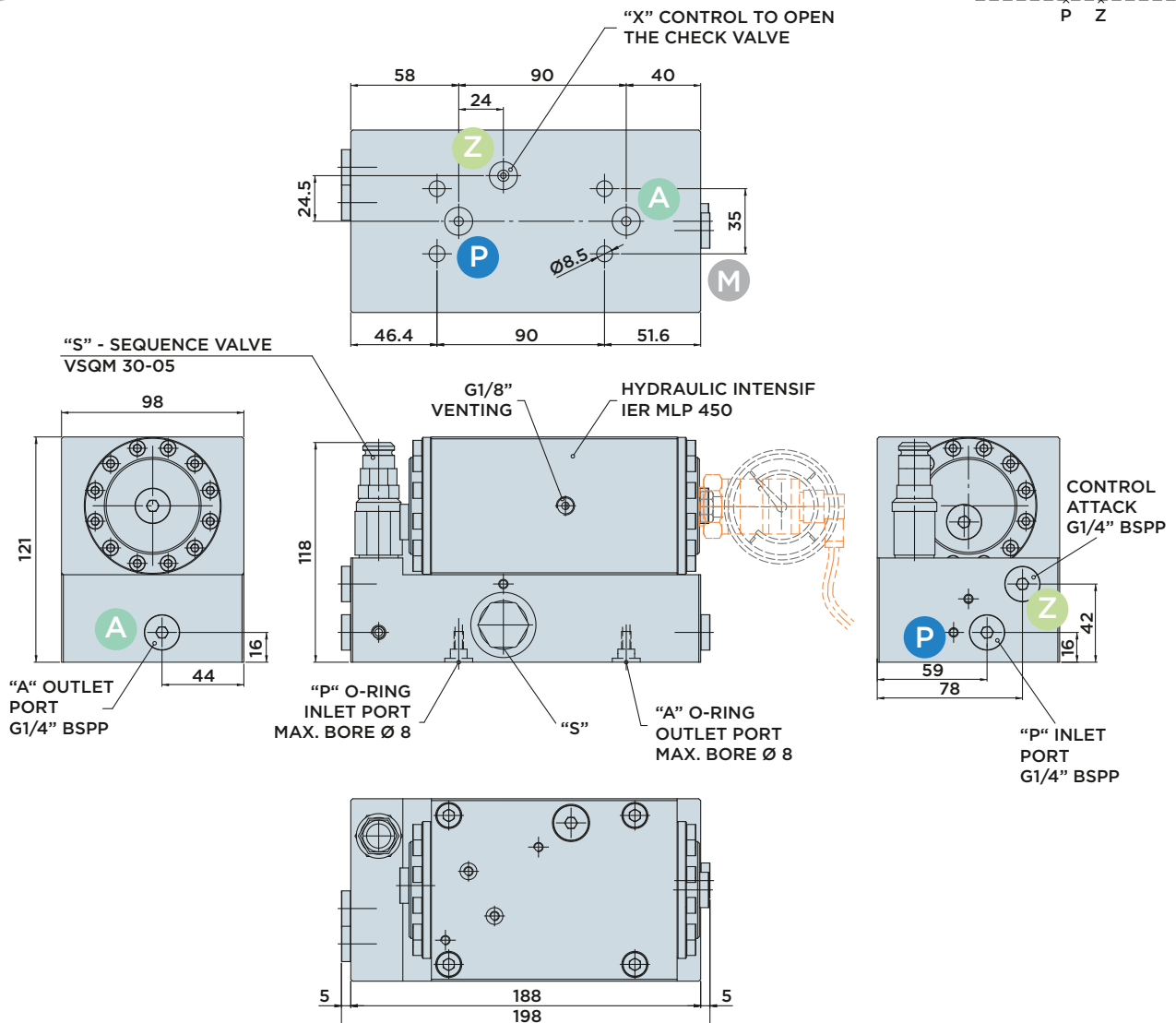
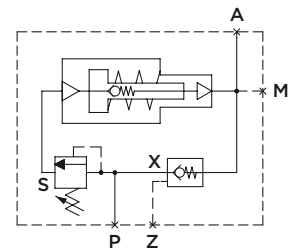


URM450-FL

HYDRAULIC INTENSIFIER WITH URM-FL FILLING SYSTEM

MAX. OPERATING PRESSURE = 500BAR

- A** : Outlet port - high pressure (secondary circuit)
- P** : Inlet port - low pressure (primary circuit)
- Z** : Control (opening) of the pilot-operated check valve
- M** : G1/4" port for pressure controller or manometer for pressure monitoring



When the "P" port is pressurized with low pressure, the high pressure is available at "A" outlet port by the pilot check valve "X". When the oil circuit has been filled, the pressure automatically increases: as soon as the pressure set at the sequence valve "S" is exceeded, the hydraulic intensifier works and increases the hydraulic pressure at "A" port. The sequence valve "S" have to

be setted with pressure valve between 80-90% of the low inlet pressure. The URM450-FL2 and URM450-FL3 hydraulic intensifiers are equipped with an integrated pilot check valve that ensures a fast flow unloading of the high pressure and minimizes any counterpressure caused by inside check valves in line.



HYDROBLOCK