

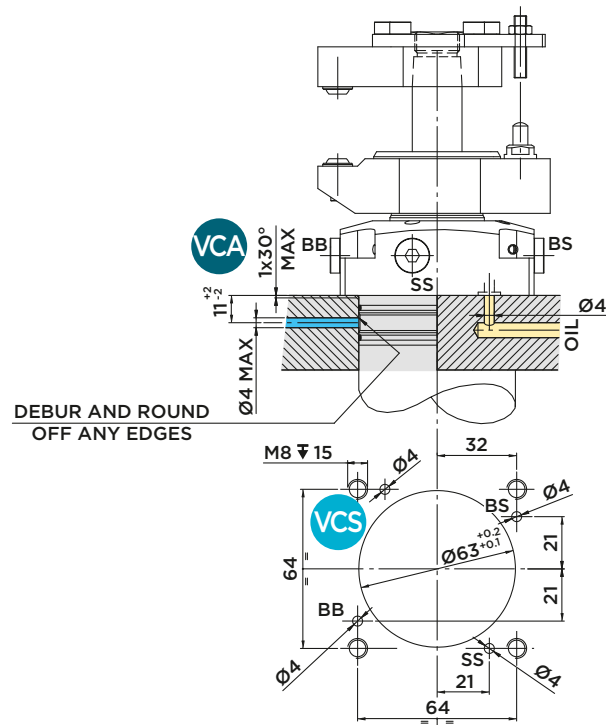
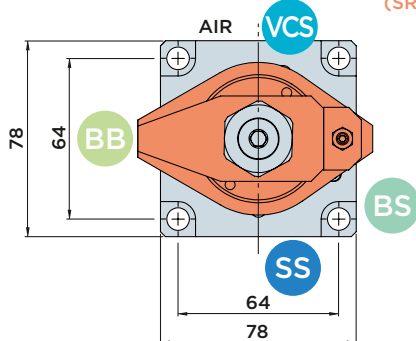
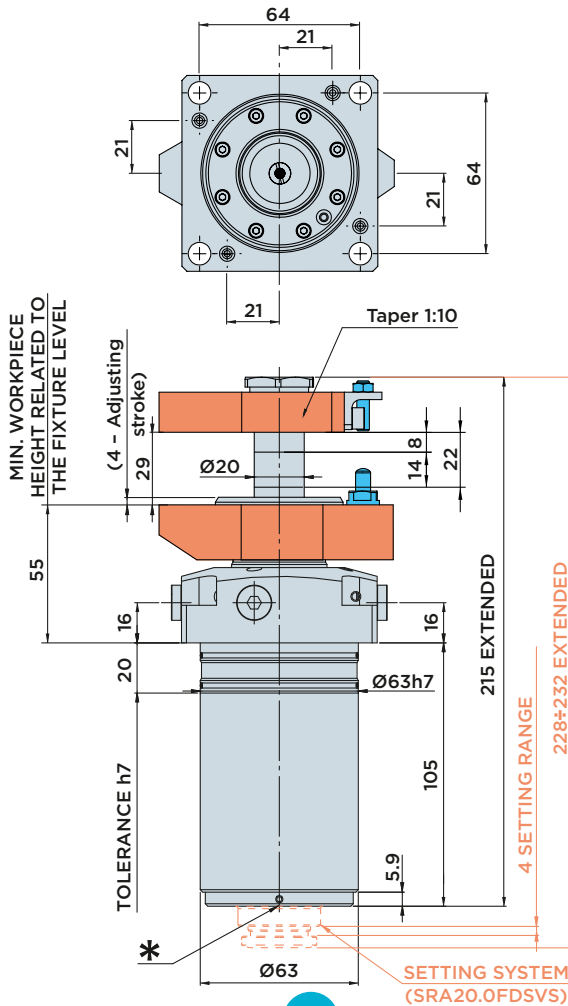
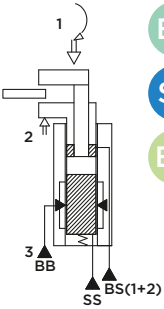
SRA20.0FDSV

MAX. PRESSURE = 250BAR

DOUBLE-ACTING SWING CYLINDER WITH INTEGRATED WORK SUPPORT, SELF-ADJUSTING,
WITH **UPPER FLANGE AND CLAMP ARM POSITION CONTROL VALVE**

- BS : Clamp arm clamping
- SS : Clamp arm unclamping
- BB : Sleeve clamping
- VCA : Clamp opening control valves
- VCS : Clamp closing control valves

INSTALLATION DIMENSIONS WITH O-RING CONNECTION



Included in the scope of supply:

- Mounting screws M8x30 DIN 912/12.9 grade
- O-Rings Ø6.07x1.78

Material:

- Piston/rod: Case-hardened steel, ground
- Body: Free machining steel, nitrocarburized

Note:

Max. admissible flow rate: 2,5 l/min
Clamping force diagram, see page 217
To adjust the setting system see page 211

Options:

The swing clamp cylinder is also available without VCS10/VCS13 clamp arm position or workpiece control valve.
Order code SRA20.0FDS

STROKE mm	EFFECTIVE PISTON AREA Cm ²	TOTAL OIL VOLUME Cm ³	
		CLAMP.	UNCLAMP.
TOTAL	22	CLAMP.	UNCLAMP.
SWINGING	8	1.38	4.52
CLAMPING	14	3	9.9

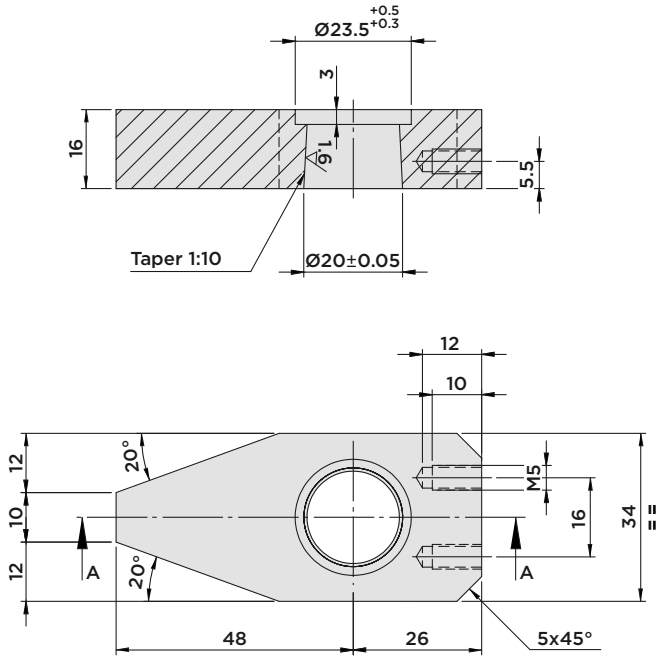


HYDROBLOCK

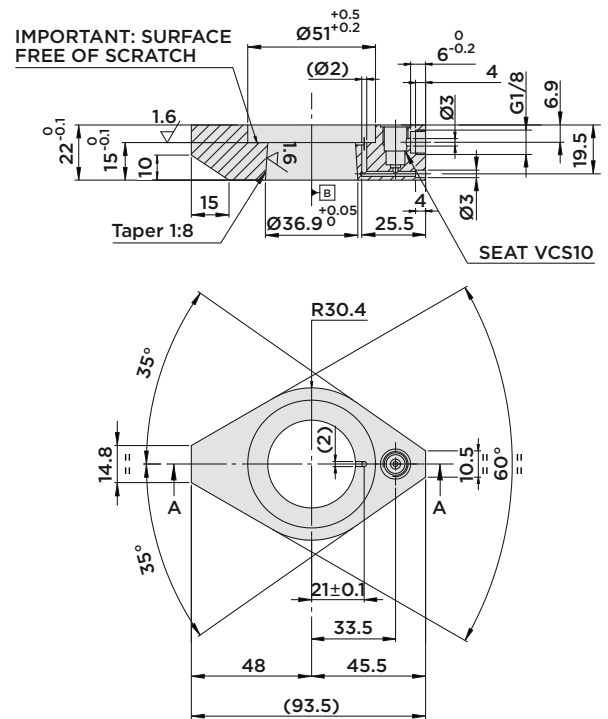
SRA20.0 FDSV SERIES

- ACCESSORIES

CLAMP ARM 04.SRA20FDSV



CLAMP ARM 21.SRA20FDSV



CLAMP ARM 22.SRA20FDSV

