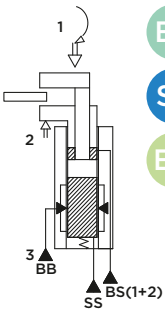


SRA16.0 FDS

DOUBLE-ACTING SWING CYLINDER WITH INTEGRATED WORK SUPPORT,
SELF-ADJUSTING, WITH **UPPER FLANGE**

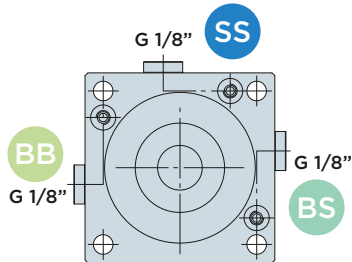
MAX. OPERATING PRESSURE = 250BAR



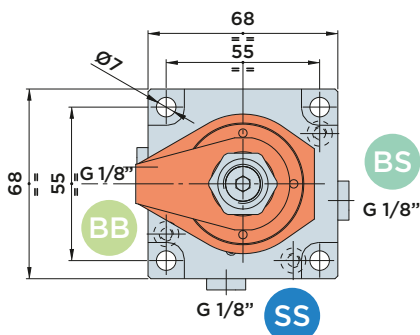
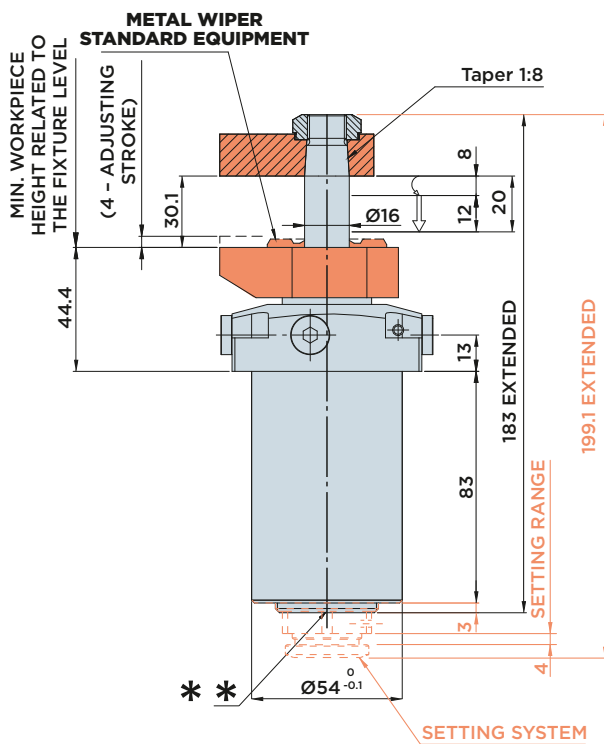
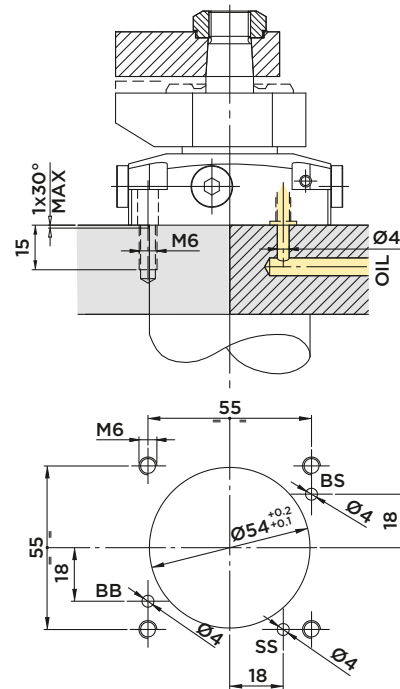
BS : Clamp arm clamping

SS : Clamp arm unclamping

BB : Sleeve clamping



INSTALLATION DIMENSIONS WITH O-RING CONNECTION



* Venting: We recommend installing a connection with a vent line leading into an area that is free from liquids and chips.

Included in the scope of supply:

- Mounting screws M6x25 DIN 912/12.9 grade
- O-Rings $\varnothing 6.07 \times 1.78$

Material:

- Piston/rod: Case-hardened steel, ground
- Body: Free machining steel, nitrocarburized

Note:

Max. admissible flow rate: 2,5 l/min
Clamping force diagram, see page 217
To adjust the setting system see page 211

STROKE mm	EFFECTIVE PISTON AREA		TOTAL OIL VOLUME		
	Cm ²		Cm ³		
TOTAL	20	CLAMP. UNCLAMP.	CLAMP. UNCLAMP.		
SWINGING	7	1.13	3.14	2.3	6.3
CLAMPING	13				

ATTENTION! G1/8" threaded supply bores only available for SRA16.0FDSxxxP

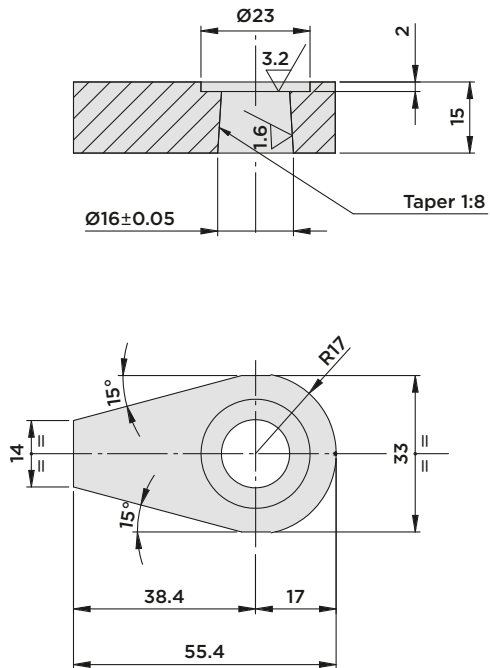


HYDROBLOCK

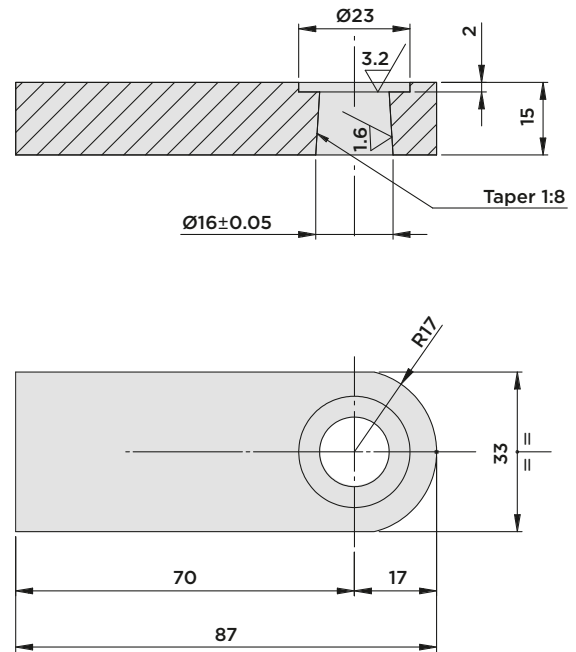
SRA16 SERIES

- ACCESSORIES

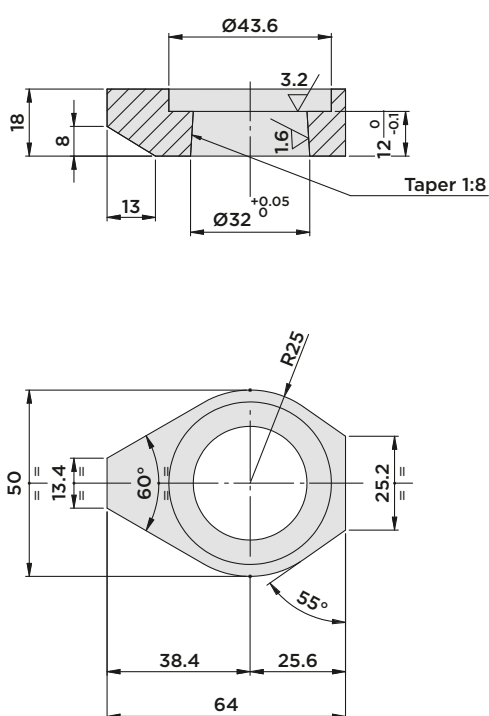
CLAMP ARM 01.SRA16



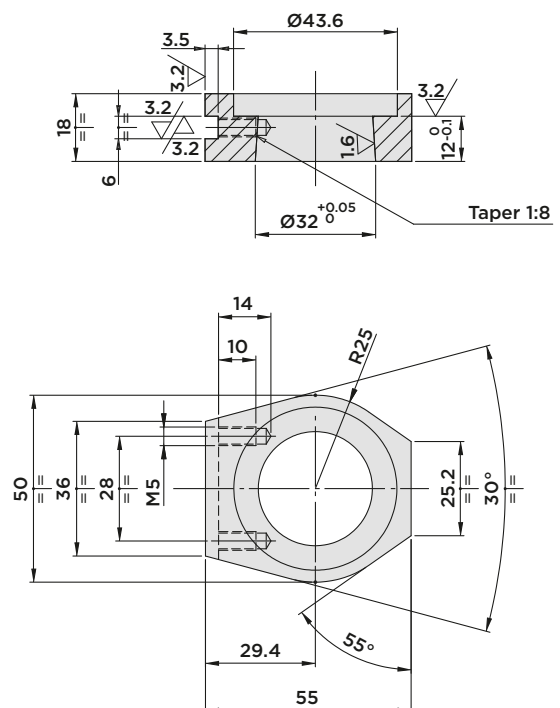
CLAMP ARM 07.SRA16



CLAMP ARM 11.SRA16



CLAMP ARM 12.SRA16



Material: C45