

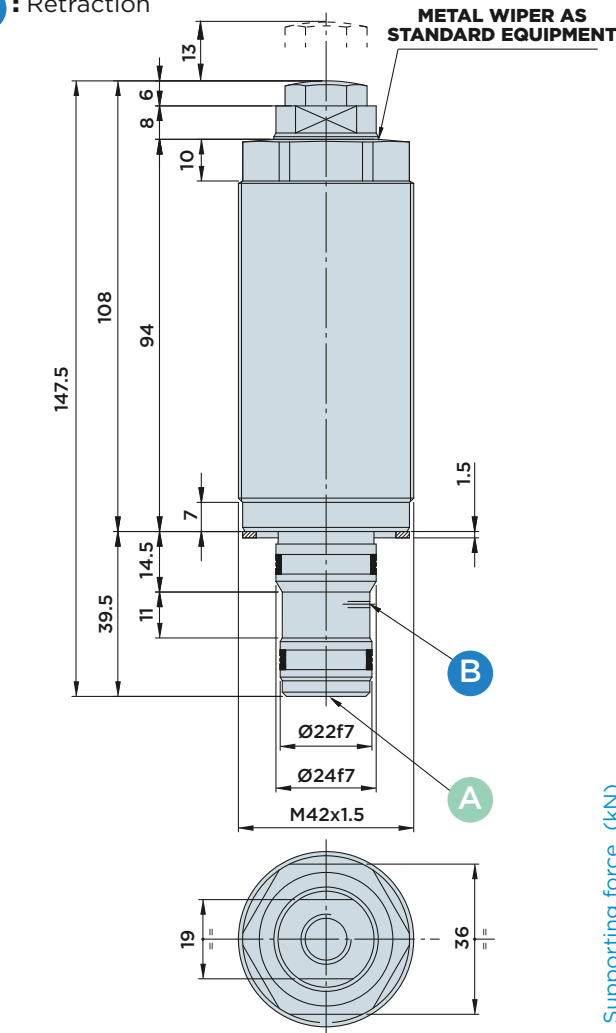
# IRFP 25.13 D

HYDRAULIC WORK SUPPORT WITH **UPPER FLANGE DOUBLE-ACTING**

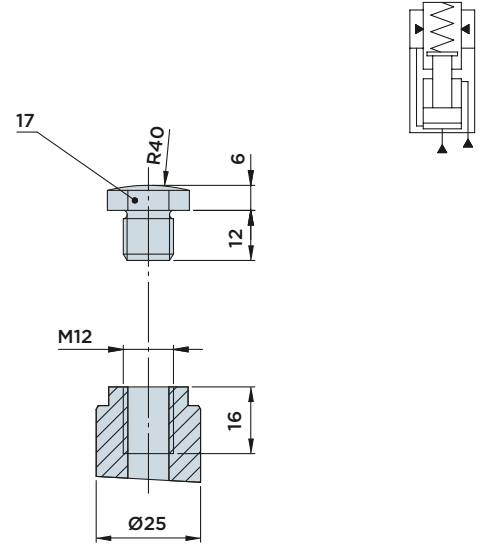
MAX. OPERATING PRESSURE = **500BAR** - MIN. OPERATING PRESSURE = **100BAR**

**A** : Extension + Clamping

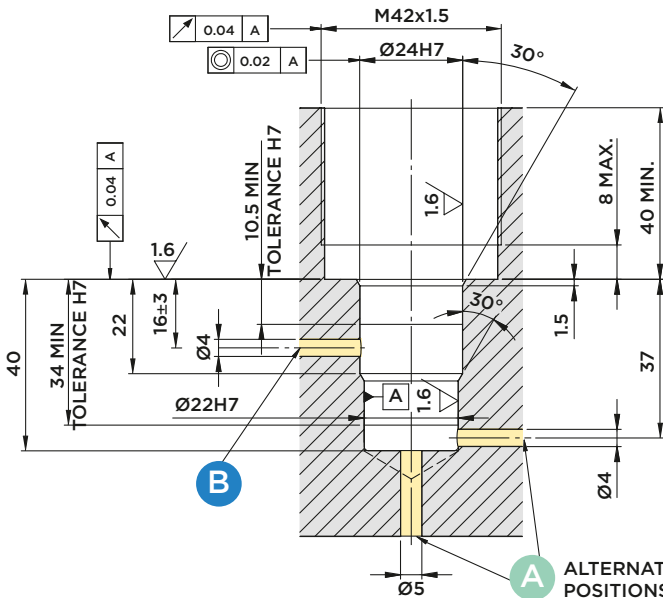
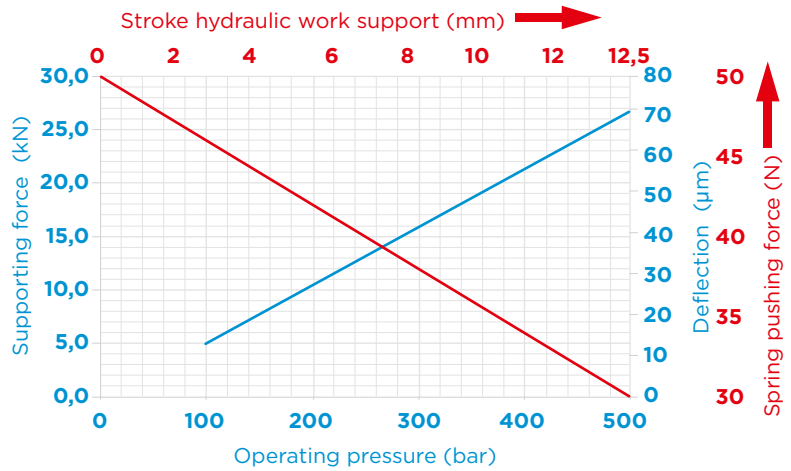
**B** : Retraction



**INSTALLATION DIMENSIONS**



**FORCE/PRESSURE/DEFLECTION DIAGRAM**



**Note:**

Cylinder capacity 1 cm<sup>3</sup>  
 The maximum admissible flow rate amounts to 1.5 l/min.  
 For example of the graph, see Pag.344

**Contact force:**

- Standard 30±50 N

**Included in the scope of supply:**

- Sealing ring Ø33.5xØ40x1.5

**Material:**

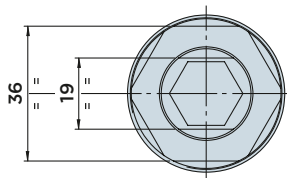
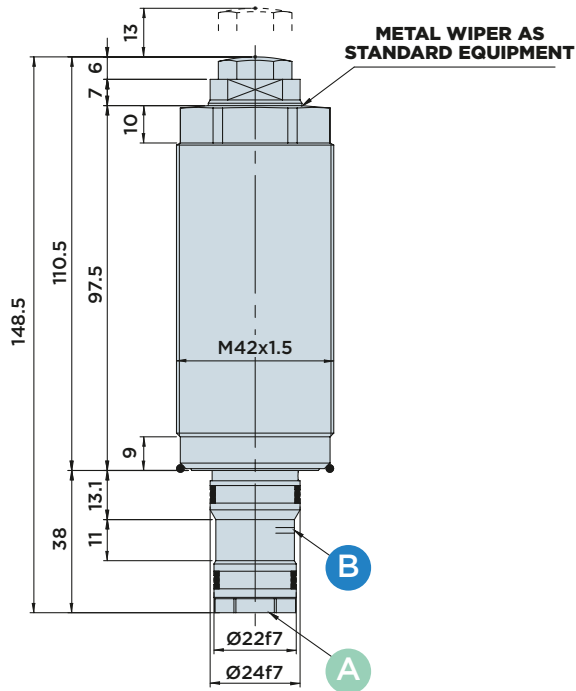
- Piston/rod: Case-hardened steel, ground.
- Body: Free machining steel, nitrocarburized.

# IRFP 25.13 DV

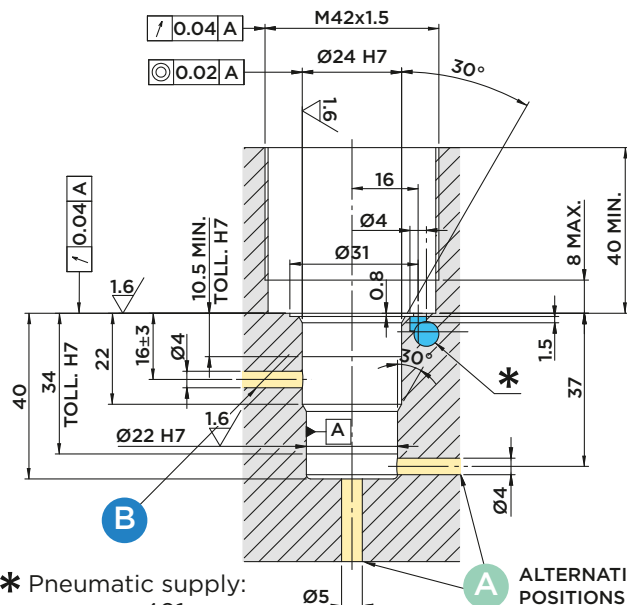
WORK SUPPORT WITH PNEUMATIC SEALING PRESSURE AND **THREADED BODY, DOUBLE-ACTING**  
 MAX. OPERATING PRESSURE = **500BAR** - MIN. OPERATING PRESSURE = **100BAR**

**A** : Extension + Clamping

**B** : Retraction

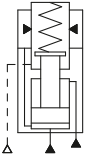
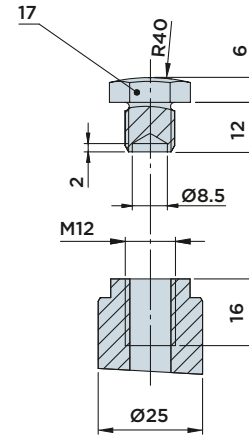


## INSTALLATION DIMENSIONS

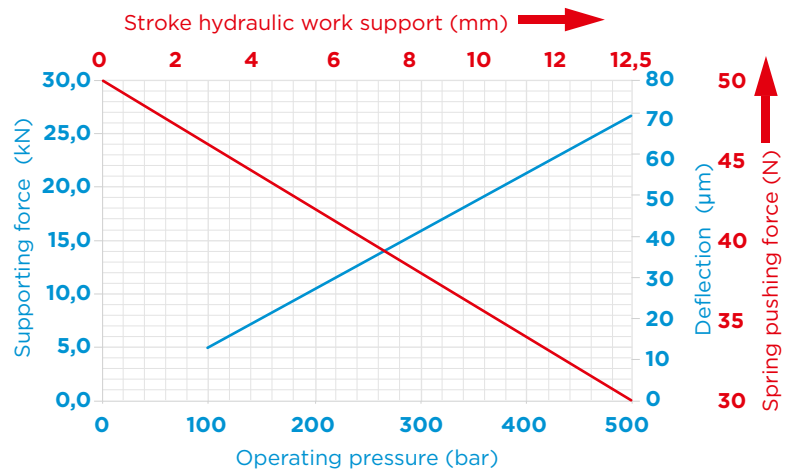


\* Pneumatic supply: see page 401.

ALTERNATIVE POSITIONS



## FORCE/PRESSURE/DEFLECTION DIAGRAM



### Note:

Cylinder capacity 1 cm<sup>3</sup>  
 The maximum admissible flow rate amounts to 1.5 l/min.  
 For example of the graph, see Pag.344

### Contact force:

- Standard 30÷50 N

### Included in the scope of supply:

- O-Rings Ø38x1.5

### Material:

- Piston/rod: Case-hardened steel, ground.
- Body: Free machining steel, nitrocarburized.