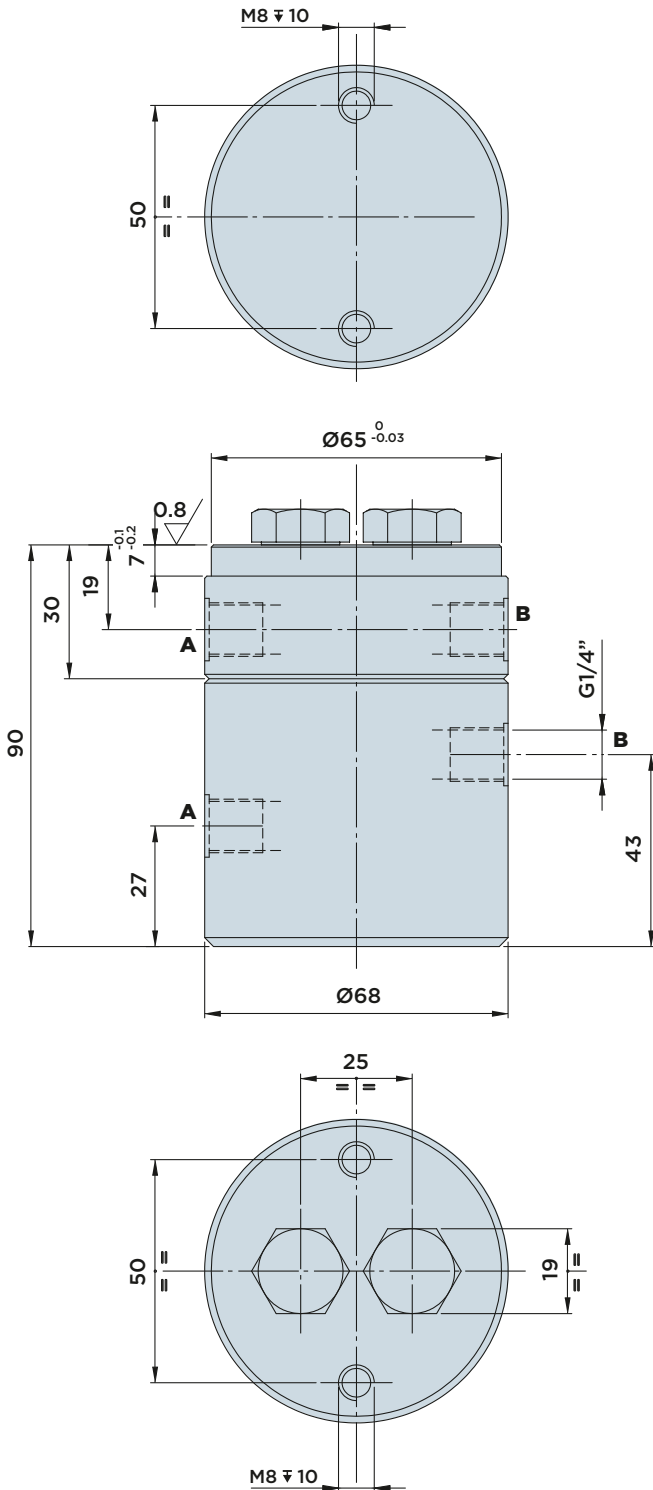
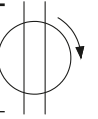


# GV ROTARY JOINTS

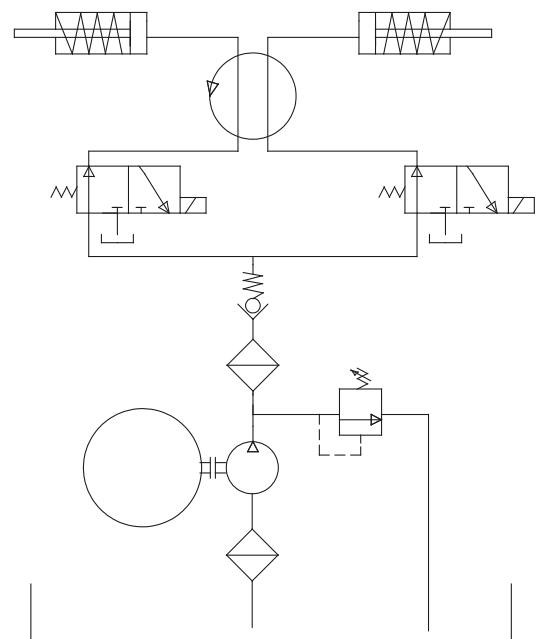
MULTI-PASSAGE ROTARY JOINTS WITHOUT LEAKAGE RECIRCULATION

MAX. OPERATING PRESSURE = 400BAR

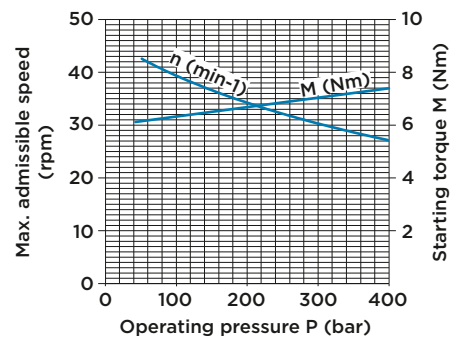
## GV2 TWO-PASSAGE ROTARY JOINT



HYDRAULIC DIAGRAM



Max. admissible speed  $n$  and corresponding starting torque  $M$  as a function of the operating pressure  $P$



GV2 two-passage rotary joint

Fixing	Flanged, 2 bores M8 $\nabla$ 10
Ports	1/4" BSPP
Angular speed	Max. 50 rpm
Weight (kg)	2.3



HYDROBLOCK