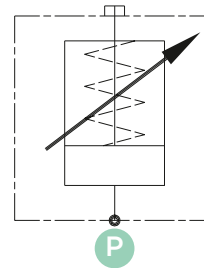
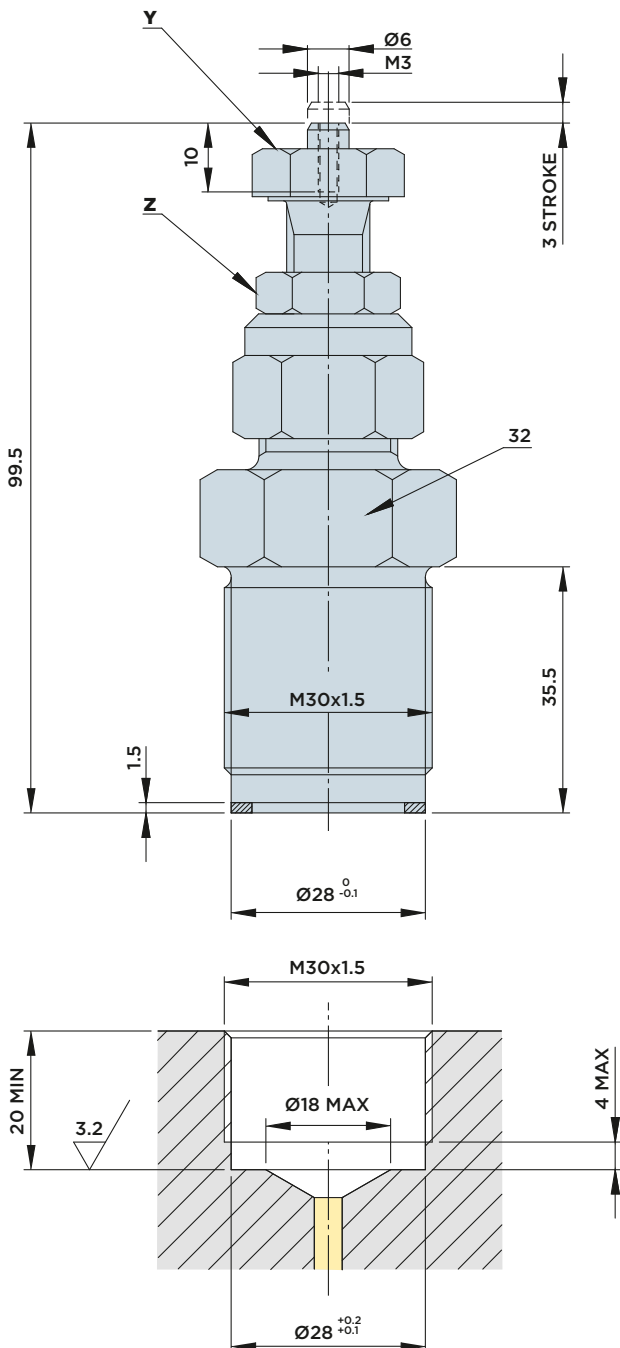


CP30F

PRESSURE MONITORING CYLINDER

MAX. OPERATING PRESSURE = 350BAR



The CP30F pressure monitoring cylinder has been developed to check the clamping pressure in a remote fixture. As soon as the clamping pressure is reached, the external bolt is extended by 3 mm from the cylinder head and remains in this position as long as the operating pressure required for the fixture is maintained. If the clamping pressure decreases, the rod is retracted again into its initial position. Thanks to the easy adjustment of the operating pressure by an adjusting screw at the cylinder and the availability of different pressure ranges, the CG30P stands out for unparalleled versatility.

Application:

When the fixture is separated from the hydraulic pressure generator, the use of a hydraulic accumulator is not always sufficient to keep the operating pressure at a level that ensures safe and reliable machining. Substantial oil leakage may reduce the clamping pressure exerted on the workpiece and cause serious damage to the equipment. By using the CP30F pressure monitoring cylinder, the operating pressure can be checked immediately before the machining process. If the required pressure level is not reached, the machining process is not enabled and the machine changes into emergency status.

Included in the scope of supply:

- Sealing ring Ø22XØ28X1.5

Order number: CP30F-cartridge code

Example: With an adjustment range of 3-100 bar, the order no. is CP30F-10.

Setting the operating pressure:

- 1) Loosen the counter nut (AF19 Z).
- 2) Turn the adjusting screw (AF 17 Y) clockwise to increase or anticlockwise to reduce the pressure.
- 3) As soon as the desired pressure level is reached, tighten the counter nut (AF19 Z) firmly.

AVAILABLE VERSIONS

Cartridge code	Adjustment range	Pressure increase per screw revolution (bar)
10	30-100	20
20	50-220	40
35	80-350	80

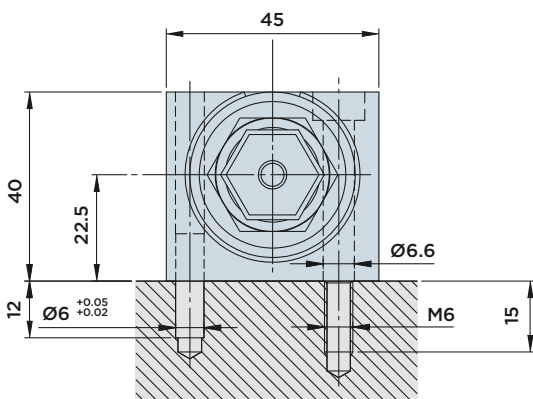
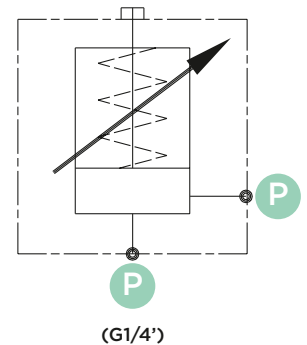
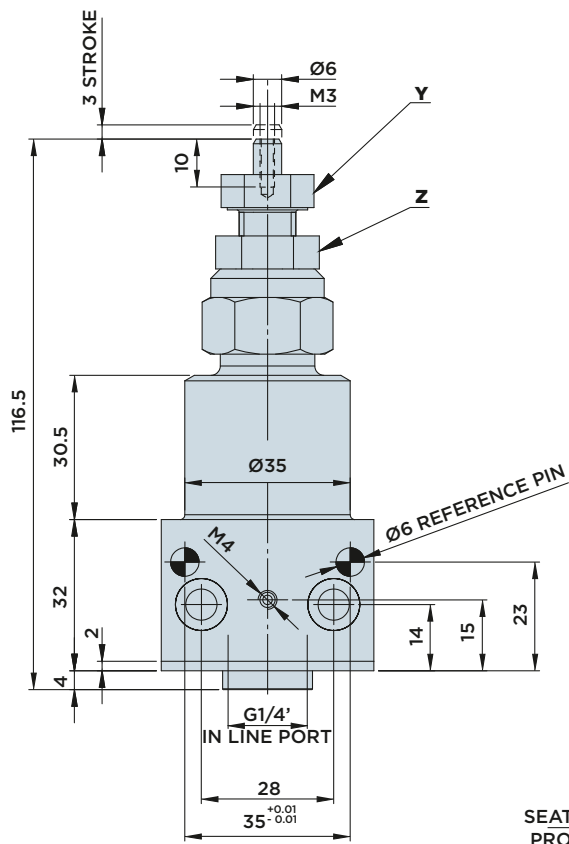


HYDROBLOCK

CP30M

PRESSURE MONITORING CYLINDER

MAX. OPERATING PRESSURE = 350BAR



Setting the operating pressure:

- 1) Loosen the counter nut (AF19 Z).
- 2) Turn the adjusting screw (AF 17 Y) clockwise to increase or anticlockwise to reduce the pressure.
- 3) As soon as the desired pressure level is reached, tighten the counter nut (AF19 Z) firmly.

Order number: CP30M-cartridge code
 Example: With an adjustment range of 5-50 bar, the order no. is CP30M-10.

Application:

When the fixture is separated from the hydraulic pressure generator, the use of a hydraulic accumulator is not always sufficient to keep the operating pressure at a level that ensures safe and reliable machining. Substantial oil leakage may reduce the clamping pressure exerted on the workpiece and cause serious damage to the equipment. By using the CP30M pressure monitoring cylinder, the operating pressure can be checked immediately before the machining process. If the required pressure level is not reached, the machining process is not enabled and the machine changes into emergency status.

Included in the scope of supply:

- Mounting screws M6x45 DIN 912/12.9 grade

AVAILABLE VERSIONS

Cartridge code	Adjustment range	Pressure increase per screw revolution (bar)
10	30-100	20
20	50-220	40
35	80-350	80



HYDROBLOCK