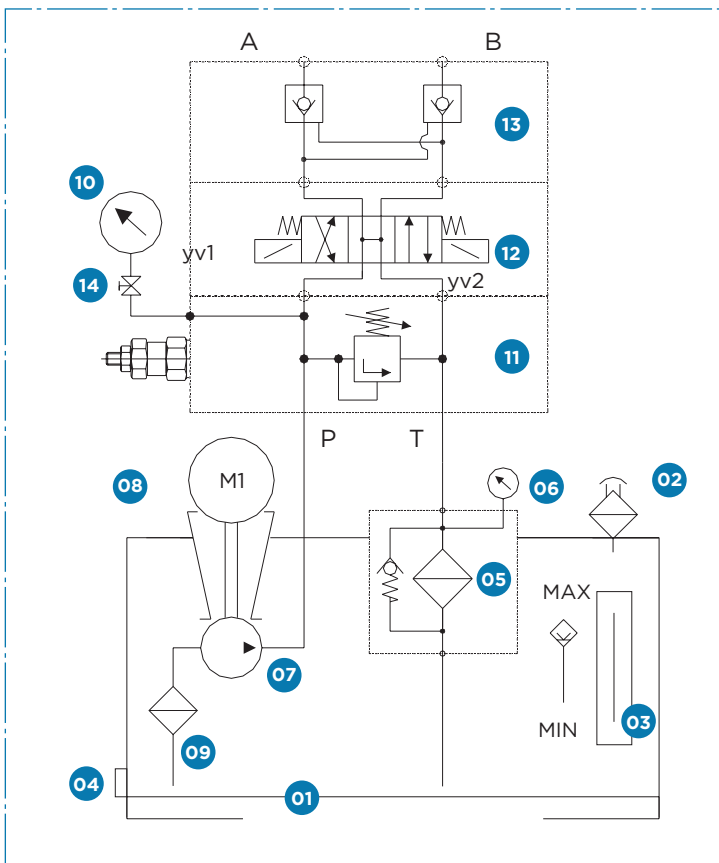
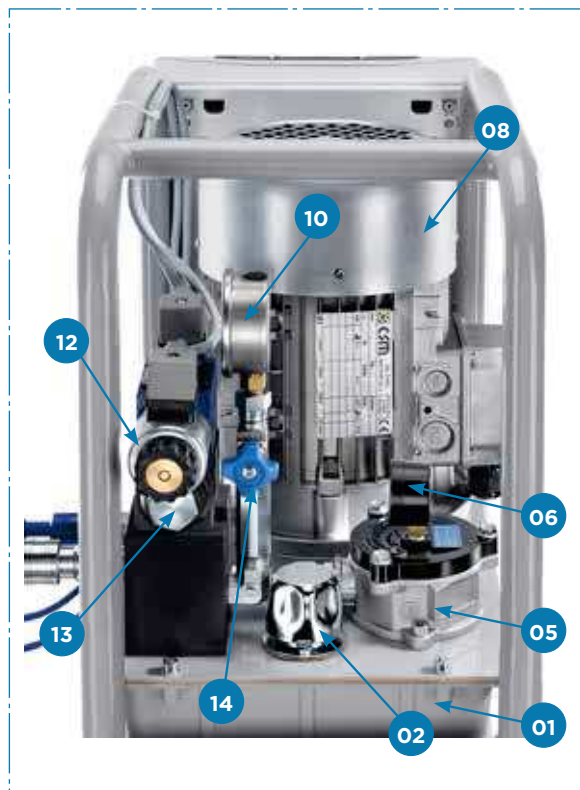


CE10

HYDRAULIC POWER UNIT



CAPTION

- 01** Oil tank of 10 l nominal capacity, 6 l useful volume
- 02** Filler plug/venting
- 03** Oil level indicator (optical)
- 04** Tank drain screw
- 05** 25 μ return filter with bypass
- 06** Contamination indicator
- 07** Gear pump 2,2 cm³/rev.
- 08** Electric motor of 1.5 kW/3 phases, 4-pole/240-400 V
- 09** 60 μ inlet filter
- 10** Pressure gauge 0/250 bar with shut-off valve
- 11** Adjustable pressure relief valve
- 12** 4/3 directional control valve CETOP 3 - 24 VDC
- 13** Hydraulically piloted double check valve CETOP 3
- 14** Pressure gauge shut-off valve

SPECIAL DESIGNS ARE AVAILABLE UPON REQUEST



HYDROBLOCK

CE10 HYDRAULIC POWER UNIT

The hydraulic power unit is designed for the operation of double and single-acting cylinders.

- Threephase motor, 1.5 kW, 4-pole, 240/400 V
- Flow rate 3 l/min.
- Max. operating pressure: 250 bar
- 10 l nominal oil tank capacity - 6 l useful volume

To ensure an efficient use of hydraulic power units over a long period of time, the following instructions must be observed. Correct set-up and mounting of the hydraulic unit are fundamental prerequisites for a long service life. Any penetration of dust, dirt and chips during mounting must be excluded. Make sure that all pipes, connections, bores and supports are in clean condition and perform mounting operations only in clean environments. When delivered, the ports of the hydraulic power unit are closed with caps. Only remove these caps immediately before starting to mount the unit and close the ports after having completed the mounting operations. When connecting additional components, please observe the hydraulic circuit diagram.

HYDRAULIC OIL

Only hydraulic fluids based on mineral oil must be used (ISO 6743/4 or DIN 51524). An oil viscosity class of ISO VG 32 to ISO 3448/ISO in an oil temperature range of 10° C to 60° C is recommended. The use of other media can cause damage to the equipment and affect the proper function of the cylinder and the components.

START-UP

After having connected the electric motor, check the pump rotation sense (with very short pulses of max. 1-2 seconds) and view the motor from the fan side. The pump should turn CLOCKWISE. The

sense of rotation MUST NOT be changed, even for a short time as this would cause damage to the pump. Bleed the hydraulic installation and add oil, if necessary, after the first few operating cycles. Venting can be performed using the bleed screws provided at the top of the unit or by loosening the connections at the cylinders/motors.

Please observe that due to the compressibility of air, any air enclosed in the circuit may cause vibrations, noise, malfunctions and premature component wear.

MAINTENANCE

Check the electrical connections and the oil level prior to each start-up. During operation, the pressure and the contamination display must be continuously observed. If the pressure gauge indicates a clogged filter, replace the filter element immediately. To ensure proper operation of the power unit, the oil in the hydraulic circuit must be regularly replaced once per year or after 1000 operating hours at the latest.

CE10 HYDRAULIC POWER UNIT

The hydraulic unit comprises the following electrical equipment:

IP 65 CONTROL BOX with:

- On/Off switch (protective motor switch)
- Undervoltage release (motor protection)
- IP65 REMOTE CONTROL unit:
- "Clamping" button
- "Unclamping" button
- Emergency stop switch
- Cable length = 1500 mm

MAINS PLUG 16 A - 400 V, three phases, neutral conductors and earth including 3000 mm cable.

