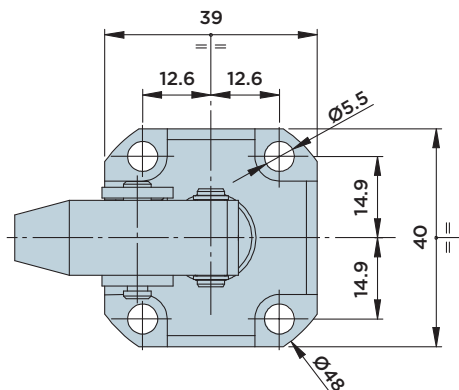
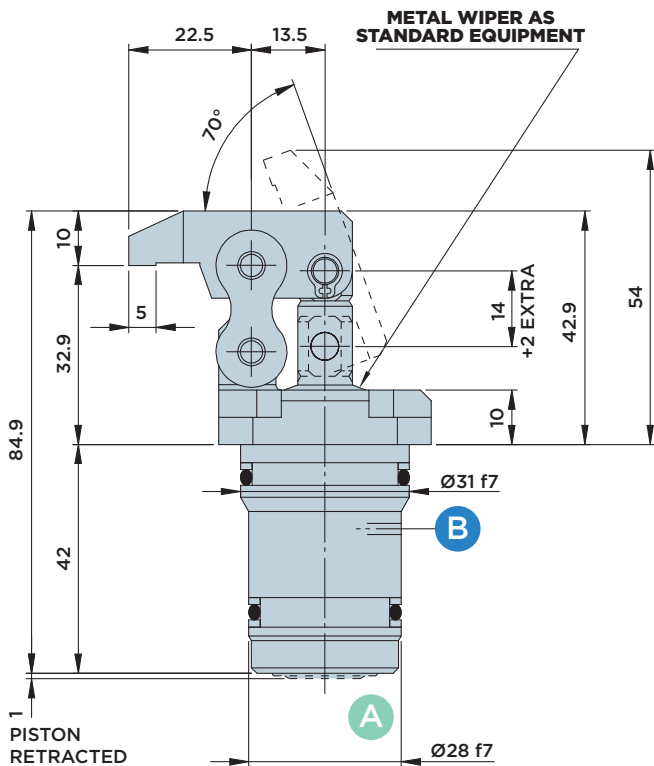


CG10.200 CD

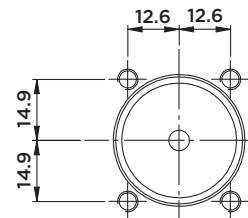
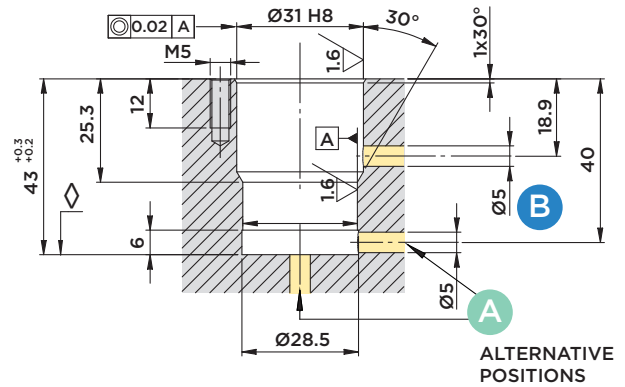
DOUBLE-ACTING **LINK CLAMP CYLINDER**

MAX. OPERATING PRESSURE = 200BAR

- A** : Clamping
- B** : Unclamping



INSTALLATION DIMENSIONS



◇ Piston contact surface

Included in the scope of supply:

- Mounting screws M5x16 DIN 912/12.9 grade.

Material:

- Piston/rod/bolts: Case-hardened steel, ground.
- Body: Free machining steel, nitrocarburized.
- Lever: Commercial type.
- Clamp arm: C45.

Options:

- Upon request, different clamp arm types can be manufactured to customer specification, mounted and commissioned.
- The link clamp cylinder can also be ordered without clamp arm (order no. CG10.200CDN).

STROKE mm	EFFECTIVE PISTON AREA		TOTAL OIL VOLUME	
	Cm ²		Cm ³	
	CLAMP.	UNCLAMP.	CLAMP.	UNCLAMP.
TOTAL 16	3.14	2.35	5	3.8



HYDROBLOCK