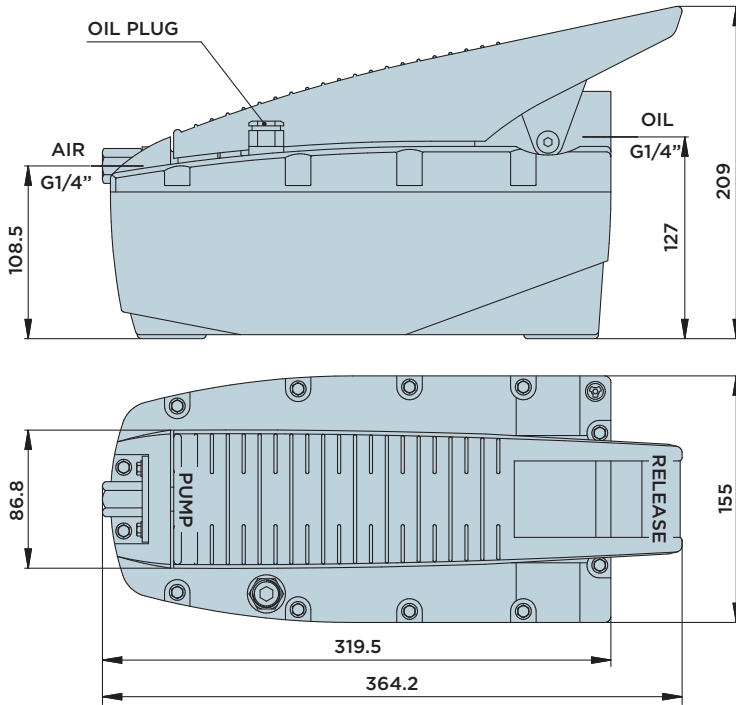
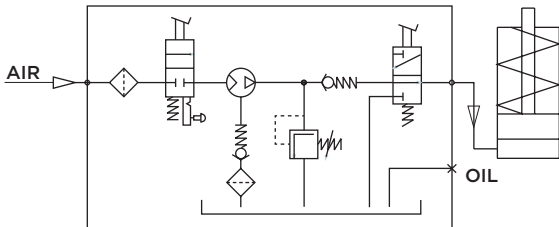


# CEPI XXX SE

AIR-OIL BOOSTER, SINGLE-ACTING VERSION

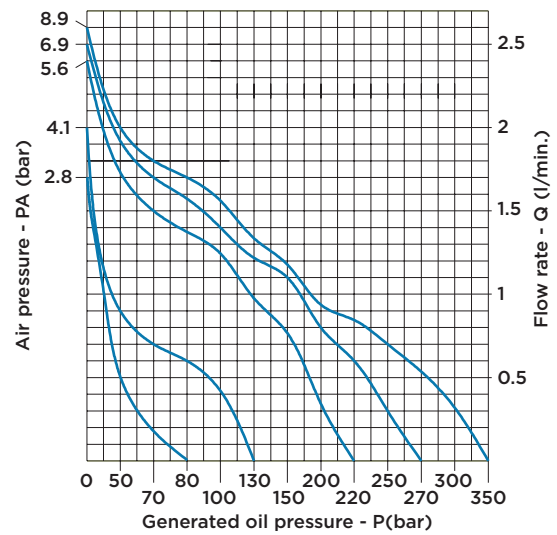


## HYDRAULIC DIAGRAM

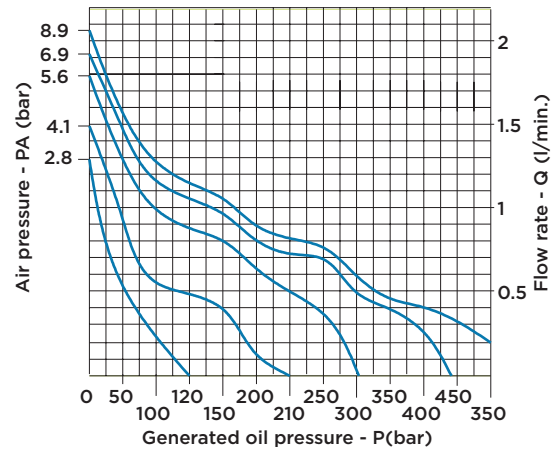


CEPI air-oil booster units for single-acting cylinders are manually operated by means of a pedal switch with three positions: upon actuation of the **PUMP** pedal, the unit is automatically started and supplies the connected circuit with oil until the desired operating pressure is reached. The supply air pressure must be controlled by means of a separate air service unit. Oiled air is not required. When the pedal is in neutral position, a check valve integrated into the unit serves for maintaining the hydraulic pressure. When pressing the pedal **RELEASE** side, the oil returns into the tank. The CEPI air-oil booster unit can also be used for double-acting cylinders provided a directional control valve is installed. Steel-plate tanks with a volume of 5 litres are available upon request.

## CEPI 250



## CEPI 500



## TECHNICAL SPECIFICATIONS

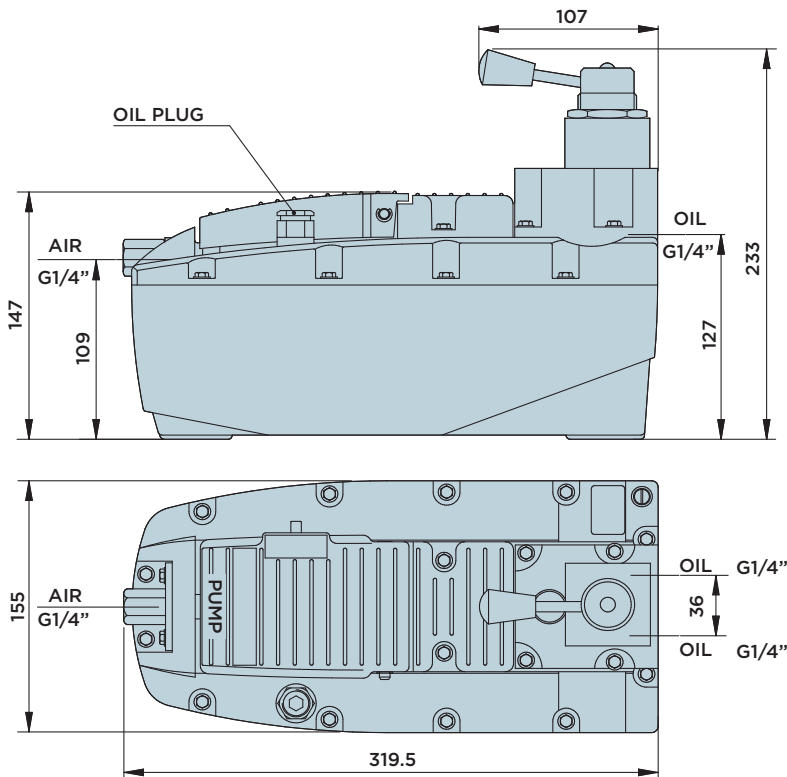
Available versions	CEPI 250 SE	CEPI 500 SE
Max. conveying capacity (l/min.)	2.2	1.4
Max. oil pressure (bar)	250	500
Min. air pressure (bar) (RECOMMENDED)	2.8	
Max. air pressure (bar)	10	
Oil tank volume (l)	2.4	
Effective oil volume (l)	2.1	
Empty weight (kg)	6.3	
Sound level (dbA)	<75	



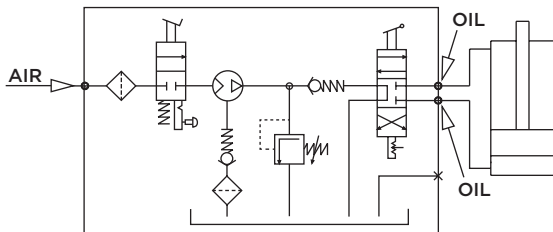
HYDROBLOCK

# CEPI XXX DE

AIR-OIL BOOSTER, DOUBLE-ACTING VERSION

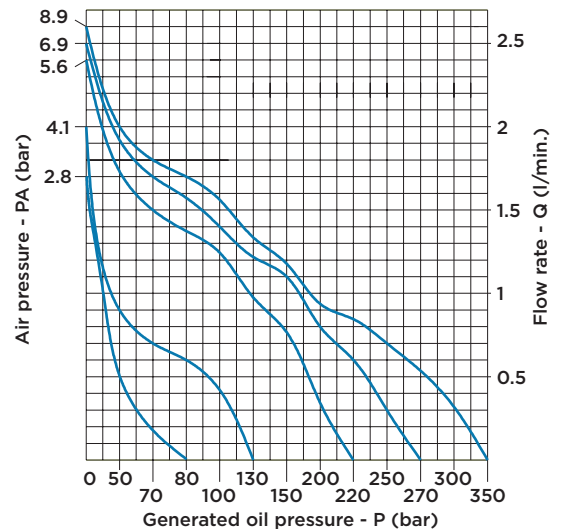


## HYDRAULIC DIAGRAM

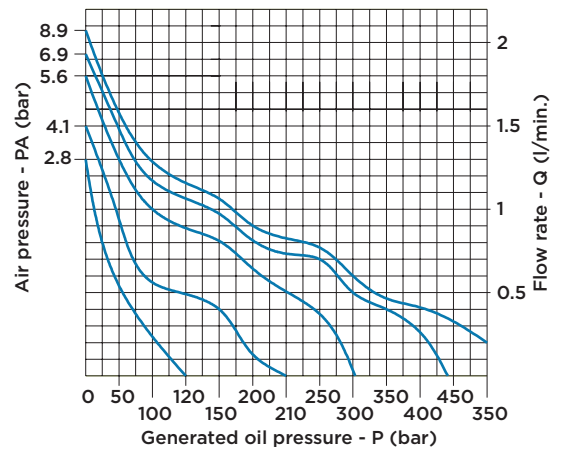


CEPI air-oil booster units for single and double-acting cylinders are manually operated by means of a pedal switch with three positions arranged upstream from the 4/3-ways directional control valve: upon actuation of the **PUMP** pedal, the unit is automatically started and supplies the connected circuit with oil until the desired operating pressure is reached. To invert the operating direction of the cylinders, release the pressure by means of the 4/3-ways directional control valve and change the lever orientation. The supply air pressure must be controlled by means of a separate air service unit. Oiled air is not required. When the control lever is in neutral position, the hydraulic pressure is maintained. Steel-plate tanks with a volume of 5 litres are available upon request.

## CEPI 250



## CEPI 500



## TECHNICAL SPECIFICATIONS

Available versions	CEPI 250 DE	CEPI 500 DE
Max. conveying capacity (l/min.)	2.2	1.4
Max. oil pressure (bar)	250	500
Min. air pressure (bar) (RECOMMENDED)	2.8	
Max. air pressure (bar)	10	
Oil tank volume (l)	2.4	
Effective oil volume (l)	2.1	
Empty weight (kg)	6.3	
Sound level (dba)	<75	



HYDROBLOCK