

SRA16.0 FDS

DOUBLE-ACTING SWING CYLINDER WITH INTEGRATED WORK SUPPORT,

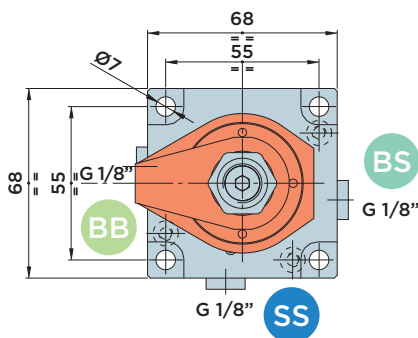
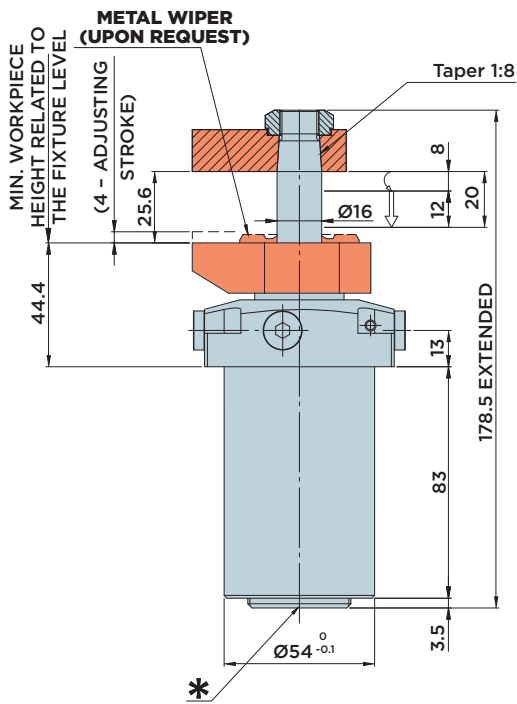
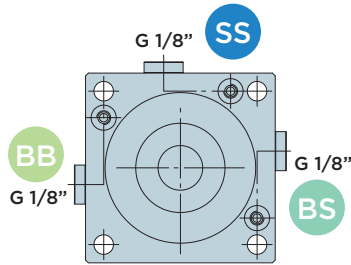
SELF-ADJUSTING, WITH **UPPER FLANGE**

MAX. OPERATING PRESSURE = 250BAR

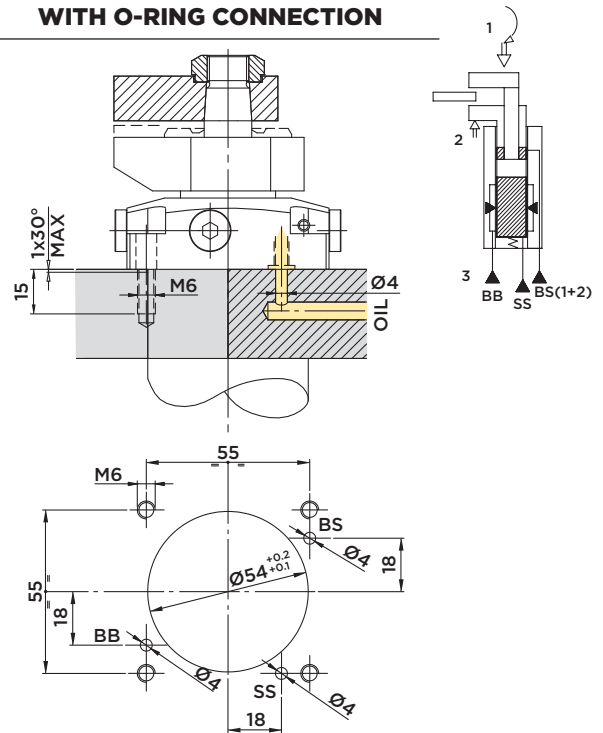
BS : Clamp arm clamping

SS : Clamp arm unclamping

BB : Sleeve clamping



INSTALLATION DIMENSIONS WITH O-RING CONNECTION



* Venting: We recommend installing a connection with a vent line leading into an area that is free from liquids and chips.

Included in the scope of supply:

- Mounting screws M6x25 DIN 912/12.9 grade
- O-Rings Ø6.07x1.78

Material:

- Piston/rod: Case-hardened steel, ground
- Body: Free machining steel, nitrocarburized

Note:

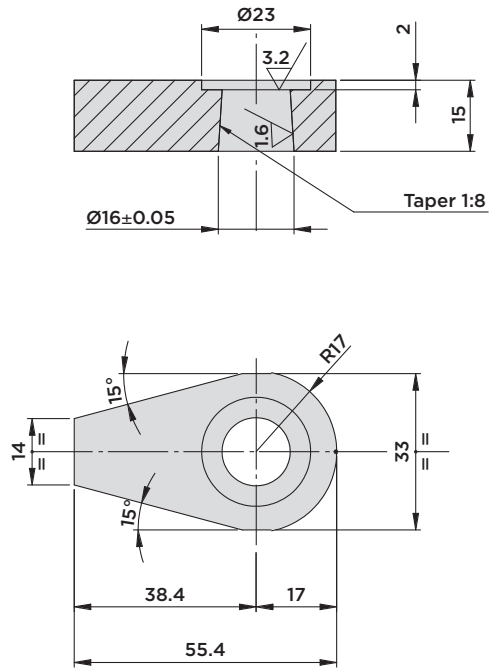
Max. admissible flow rate: 2,5 l/min
Clamping force diagram, see page 112

	STROKE mm	EFFECTIVE PISTON AREA		TOTAL OIL VOLUME	
		CLAMP.	UNCLAMP.	CLAMP.	UNCLAMP.
		Cm ²		Cm ³	
TOTAL	20				
SWINGING	7				
CLAMPING	13	1.13	3.14	2.3	6.3

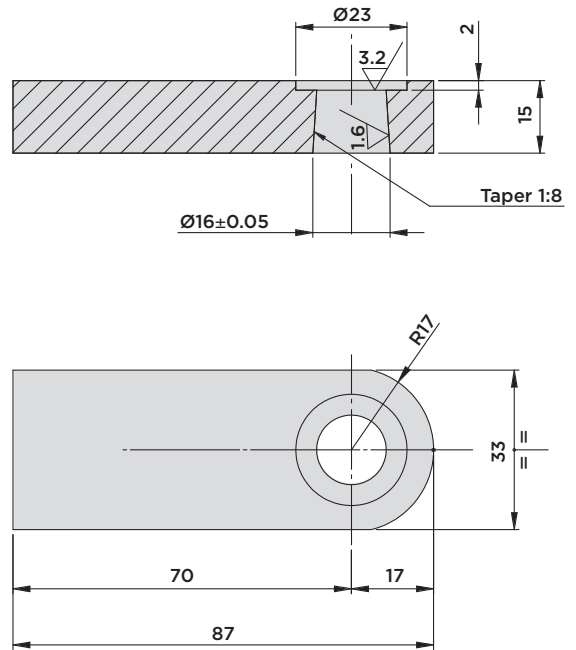
SRA16 SERIES

• ACCESSORIES

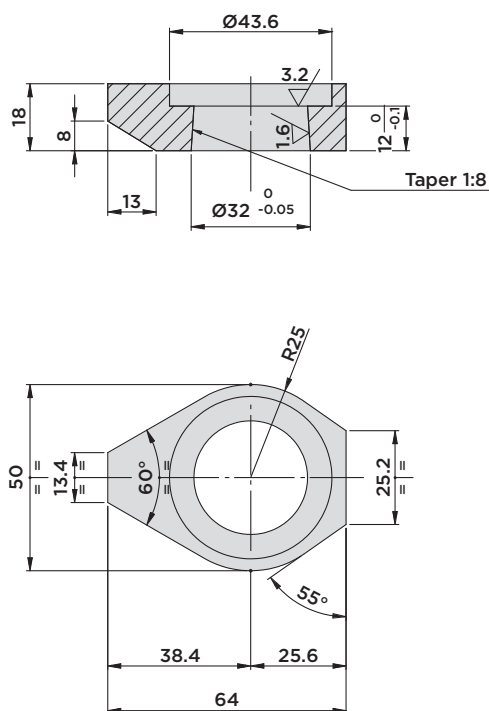
CLAMP ARM 01.SRA16



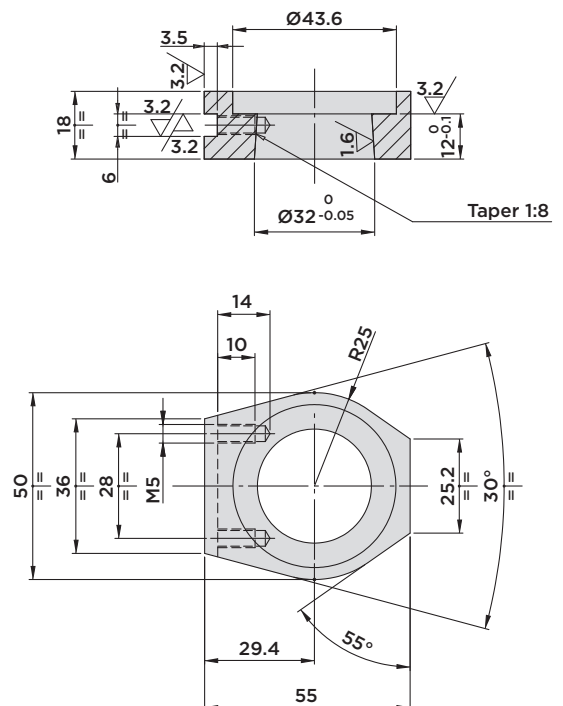
CLAMP ARM 07.SRA16



CLAMP ARM 11.SRA16



CLAMP ARM 12.SRA16



Material: C45



HYDROBLOCK