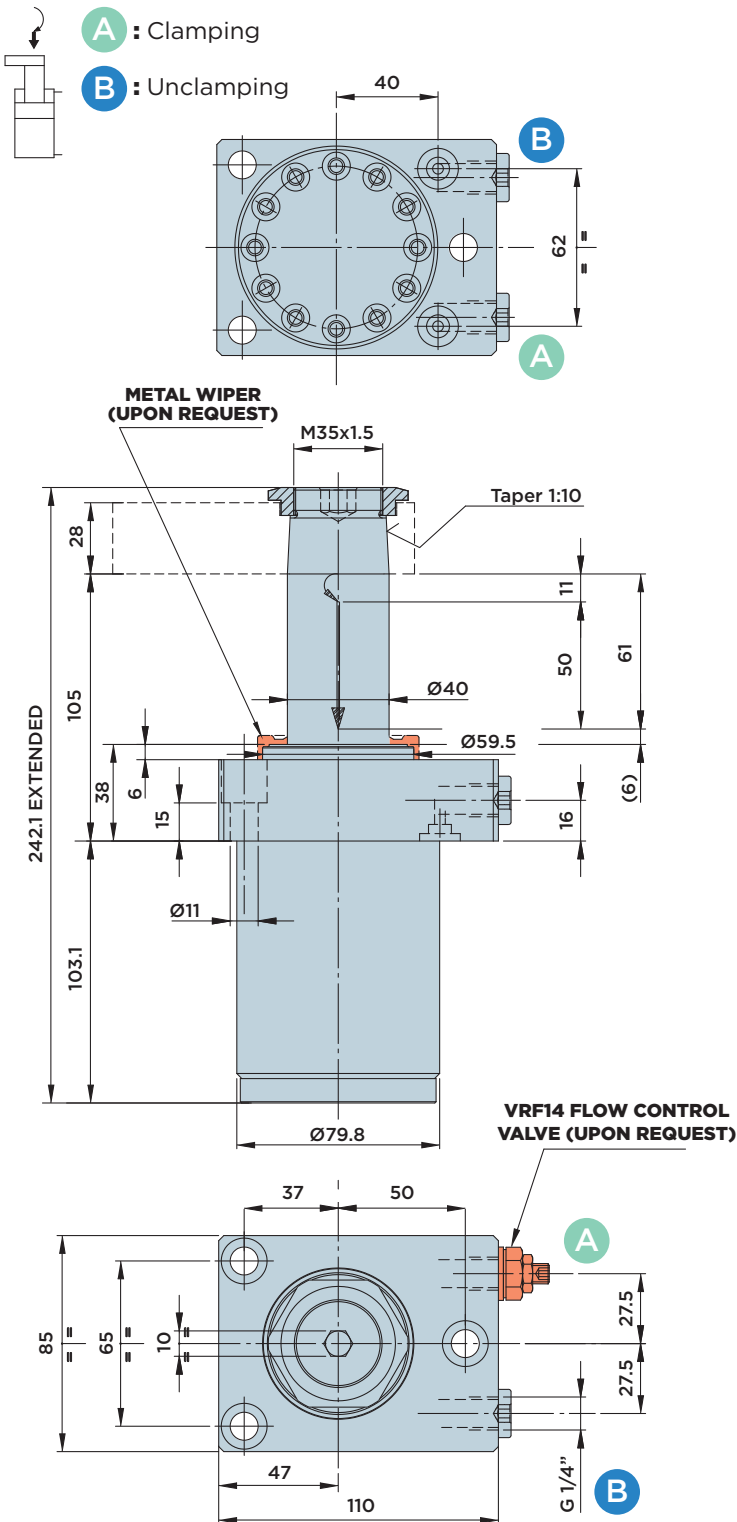


SR40.61 FD

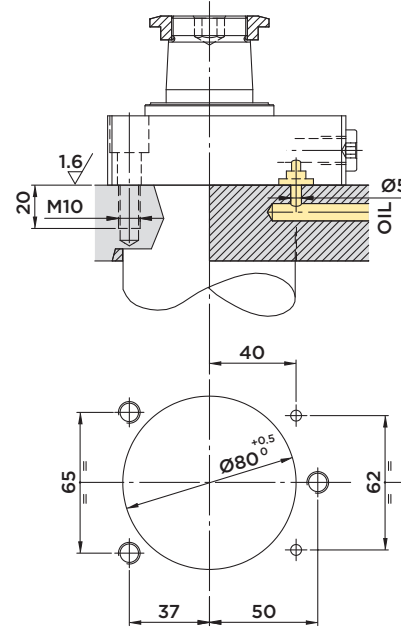


DOUBLE-ACTING SWING CLAMP CYLINDER WITH **UPPER FLANGE**

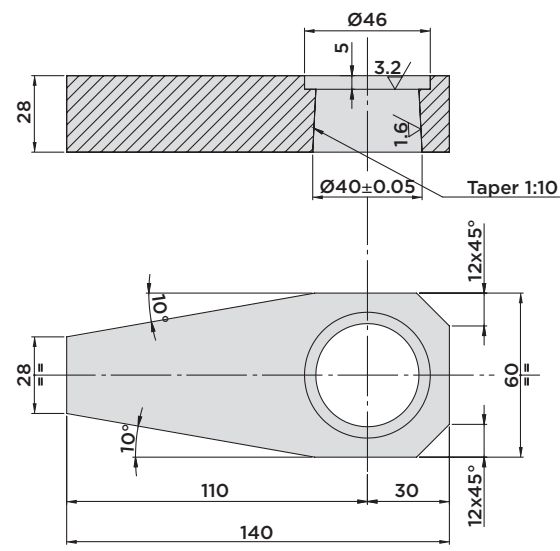
MAX. OPERATING PRESSURE = 500BAR



INSTALLATION DIMENSIONS



CLAMP ARM 01.40



- Included in the scope of supply:**
- Mounting screws M10x35 DIN 912/12.9 grade
 - O-Rings 4036 Ø9.12x3.53

Note:
Order code, see page 38

STROKE mm	EFFECTIVE PISTON AREA		TOTAL OIL VOLUME	
	Cm ²		Cm ³	
TOTAL	61	CLAMP. UNCLAMP.	CLAMP. UNCLAMP.	
SWINGING	11	7.06 19.63	43.1 119.7	
CLAMPING	50			



