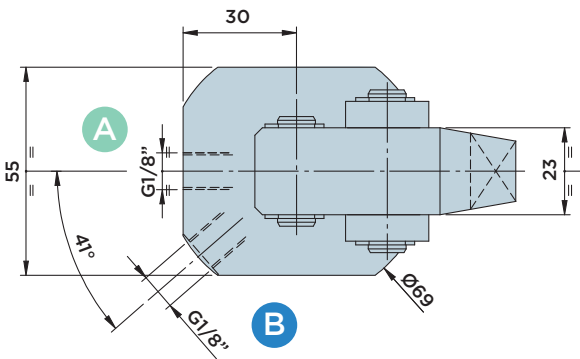
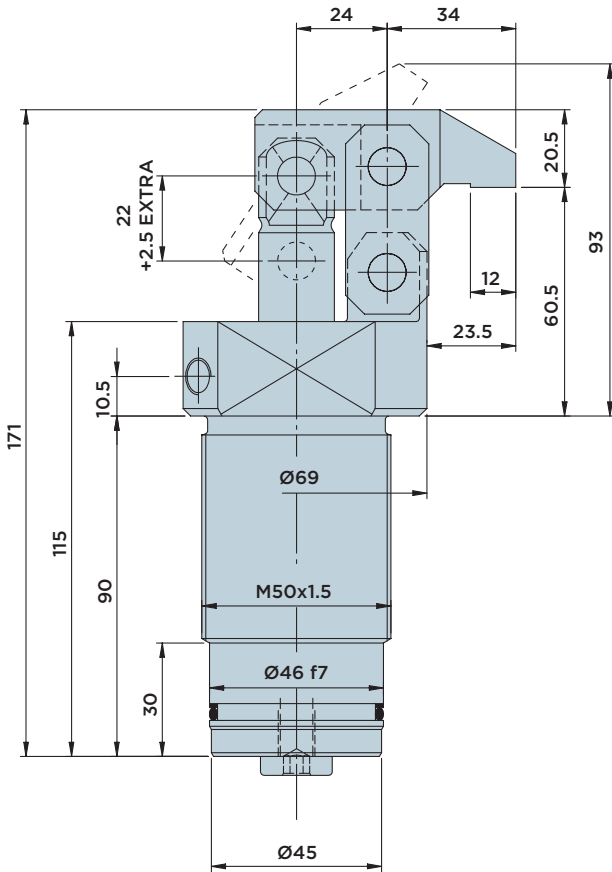
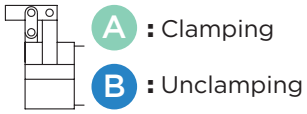


# CGF50.0 D

DOUBLE-ACTING **LINK CLAMP CYLINDER**

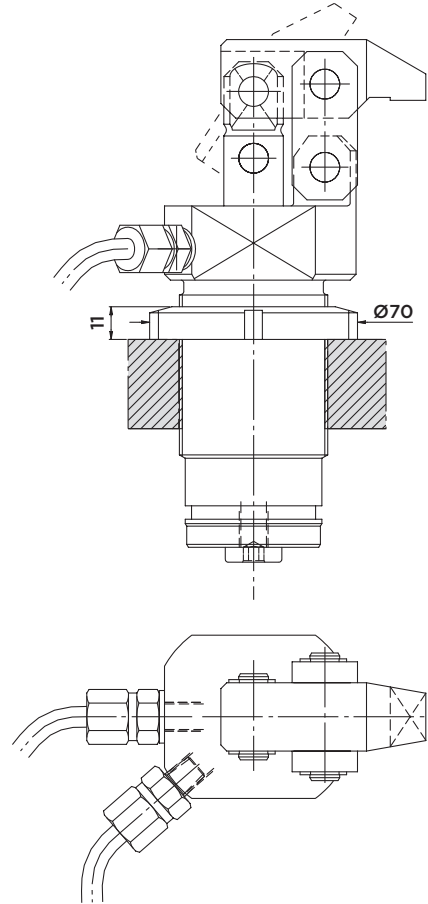
MAX. OPERATING PRESSURE = 200BAR



**Options:**

- Upon request, different clamp arm types can be manufactured to customer specification, mounted and commissioned.
- The link clamp cylinder can also be ordered without clamp arm (order no. CGF50.ODN).

**INSTALLATION EXAMPLE**



**Included in the scope of supply:**

- Ring nut M50x1.5.

**Available upon request:**

A second M40x1.5 ring nut for mounting in unthreaded through-holes can additionally be delivered.

**Material:**

- Piston/rod/bolts: Case-hardened steel, ground.
- Body: Free machining steel, nitrocarburized.
- Lever: Quenched and Tempered steel.
- Clamp arm: C45.

STROKE mm	EFFECTIVE PISTON AREA		TOTAL OIL VOLUME	
	Cm <sup>2</sup>		Cm <sup>3</sup>	
	CLAMP.	UNCLAMP.	CLAMP.	UNCLAMP.
<b>TOTAL</b> 24.5	9.08	5.94	22.2	14.6



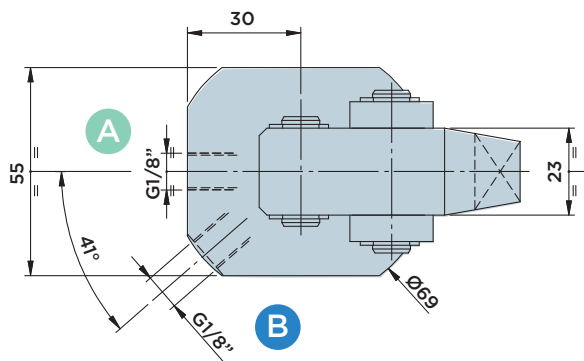
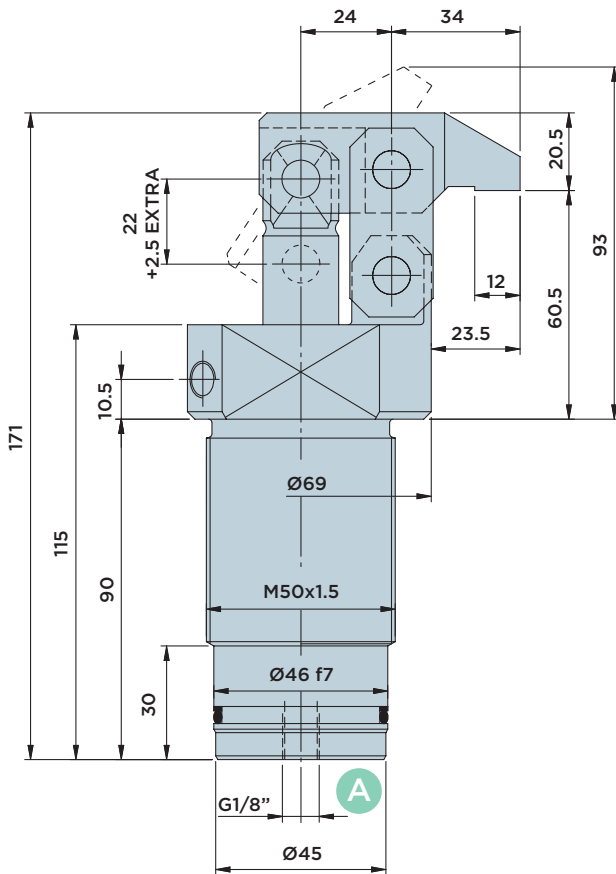
# CGF50.0 S

SINGLE-ACTING LINK CLAMP CYLINDER

MAX. OPERATING PRESSURE = 200BAR

**A** : Clamping

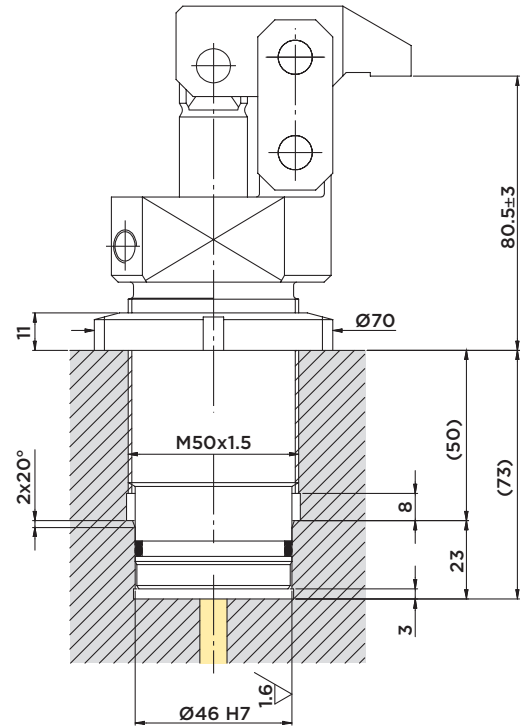
**B** : Venting



**Options:**

- Upon request, different clamp arm types can be manufactured to customer specification, mounted and commissioned.
- The link clamp cylinder can also be ordered without clamp arm (order no. CGF50.OSN).

**INSTALLATION DIMENSIONS**



**Included in the scope of supply:**

- Ring nut M50x1.5.

**Available upon request:**

A second M50x1.5 ring nut for mounting in unthreaded through-holes can additionally be delivered.

**Material:**

- Piston/rod/bolts: Case-hardened steel, ground.
- Body: Free machining steel, nitrocarburized.
- Lever: Quenched and Tempered steel.
- Clamp arm: C45.

STROKE mm	EFFECTIVE PISTON AREA	TOTAL OIL VOLUME
	Cm <sup>2</sup>	Cm <sup>3</sup>
<b>TOTAL</b> 24.5	CLAMP.	CLAMP.
	9.08	22.2

